

2026 MODULAR HOUSE ASTIBO



Sowing the foundation for sustainable living.

Designed with sustainability at their core, our wooden multifamily houses use renewable materials and smart design to deliver energy-efficient, low-impact living spaces. The natural warmth of wood creates an inviting atmosphere while contributing to a healthier environment. Each home is a step toward a more sustainable future and stronger, more conscious communities.





EXPLORE

Quality with Purpose

We elevate your living standards through smart design, refined comfort, and high-quality construction. Our prefabricated homes are affordable, durable, and environmentally responsible — built to support modern living without compromise.

Our modular homes are thoughtfully designed to simplify everyday life and create a better living experience for you.

dHouse
be different

craftsmanship



Assembly Process

Our assembly process begins with precise site preparation and the installation of the structural base. The wooden framework is assembled modularly using prefabricated components, ensuring fast, accurate, and reliable construction.

Each connection is secured with certified steel connectors, providing high structural stability and long-term durability. The process is efficient, clean, and designed to minimize impact on the site.

Be Green. Do green.
Safe Environment.

MIES VAN DER ROHE:

“God is in the details”



Crafting on Premium Level

Manufactured under controlled conditions, our villas ensure consistently high quality, faster delivery times, and reduced environmental impact compared to traditional construction methods. At dHouse, we don't just build homes — we manufacture living spaces that stand for luxury, sustainability, and a new standard of modern living.



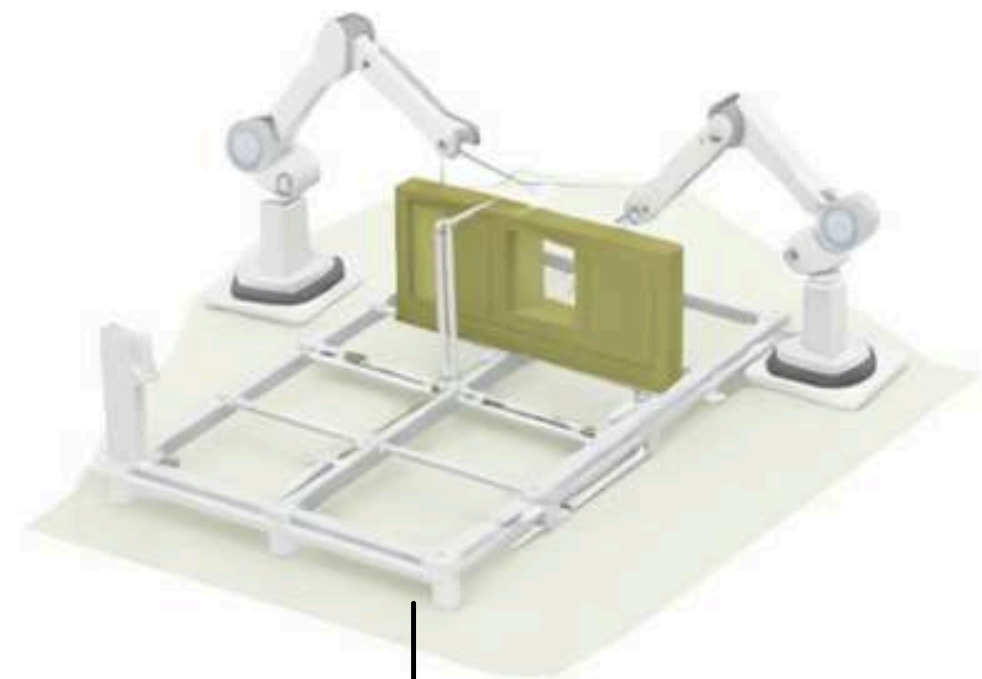


Three
Elements.
One Timeless
Design.

refined single-storey residence defined by clean architectural lines and a minimalist composition. The interplay between crisp white volumes and warm wooden accents creates a balanced and contemporary aesthetic.



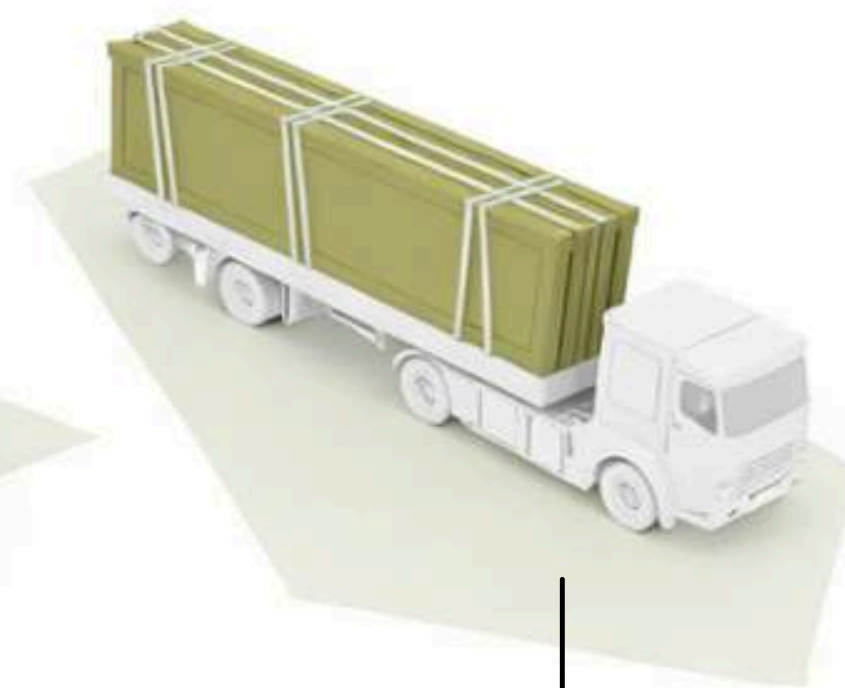
The Process - How it works?



Fabricate



Load



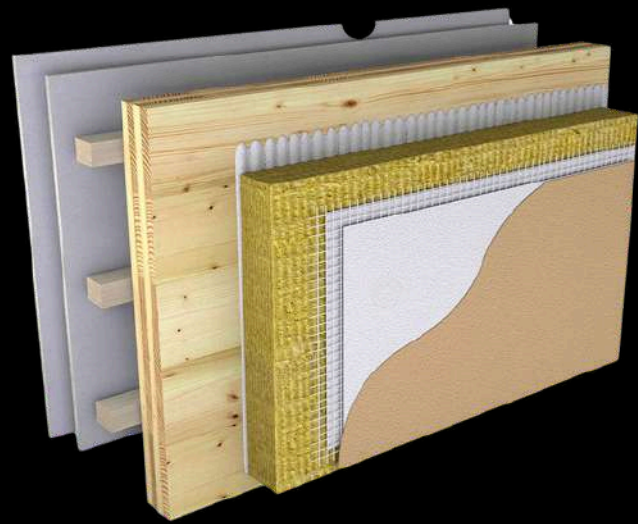
Transport



Assembly

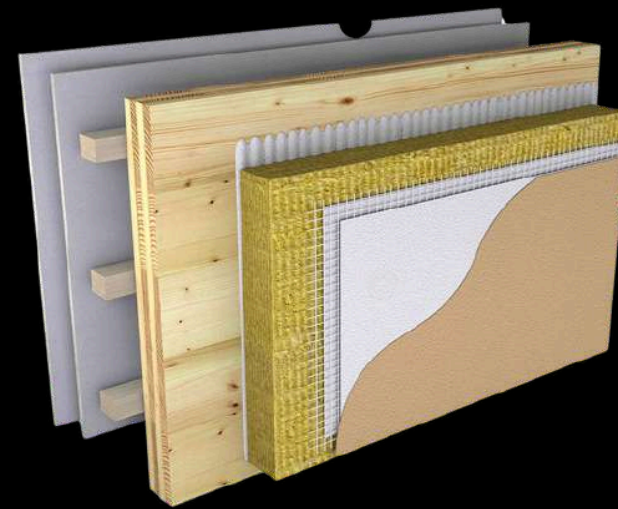
Construction System

Our building solutions are developed to adapt to a wide spectrum of architectural and structural applications. By relying on proven materials, trusted brands, and internationally approved standards such as **CE** and **ETA**, we ensure reliability, durability, and high performance in every project.



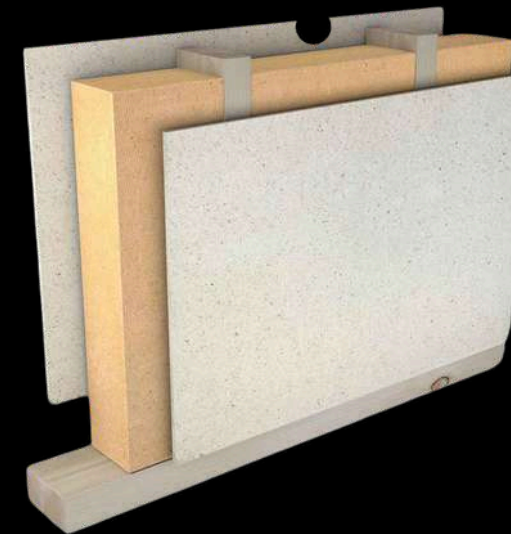
External wall

- 1 Plaster / Wood
- 2 Reinforcement mesh
- 3 OSB board 12 mm
- 4 Thermal insulation (Tervol) 50 mm
- 5 Stone wool insulation 50 mm
- 6 Vapor barrier membrane
- 7 OSB board 12 mm
- 8 Timber structure 5 × 10 cm
- 9 Gypsum board 12.5 mm



External wall

- 1 HPL / Fiber Cement Board / Wood
- 2 Substructure and stone wool insulation 5 cm
- 3 OSB Board/3 Swiss - 15 mm
- 4 Thermal Insulation Tervol 5 cm
- 5 Vapor Barrier Foil
- 6 OSB Board/3 Swiss - 15 mm
- 7 Stone Wool Insulation 5 cm
- 8 Timber Structure 5 × 15 cm
- 9 Fire Resistant Gypsum Board 12.5 mm



Internal wall

- 1 Gypsum SonicBoard panel (acoustic) 12.5 mm
- 2 OSB board 12 mm
- 3 Thermal insulation (Tervol) 100 mm
- 4 Timber structure 10 × 5 cm - KVH
- 5 OSB board 12 mm
- 6 Gypsum SonicBoard board 12.5 mm OR
- 7 WPC Interior Board



Floor

- 1 Laminate AC5 - 12 mm
- 2 Felt underlay
- 3 Screed 5 cm
- 4 Nylon foil
- 5 Styrodur (XPS insulation) 2 cm



Construction System

Our building solutions are developed to adapt to a wide spectrum of architectural and structural applications. By relying on proven materials, trusted brands, and internationally approved standards such as **CE** and **ETA**, we ensure reliability, durability, and high performance in every project.

dHouse
be different

Equipped Bathrooms / Floor Heating Optional

- 1 Mirror
- 2 Concealed toilet cistern / Geberit
- 3 Cabin
- 4 Bath Furniture
- 5 Toilet bowl
- 6 Washbasin
- 7 Shower glass enclosure
- 8 Three types of tiles
- 9 Floor Heating - Optional



EXPERIENCE

ASTIBO BACK VIEW

The exterior is defined by clean, modern lines and a minimalist architectural language. Smooth white façade panels are complemented by warm natural wood accents, creating a balanced and timeless appearance.

Large, precisely aligned surfaces emphasize simplicity and elegance, while the low-profile form blends seamlessly into the surrounding landscape. The design focuses on durability, clarity, and harmony with nature, resulting in a refined and contemporary exterior with a strong architectural presence.

dHouse
be di erent

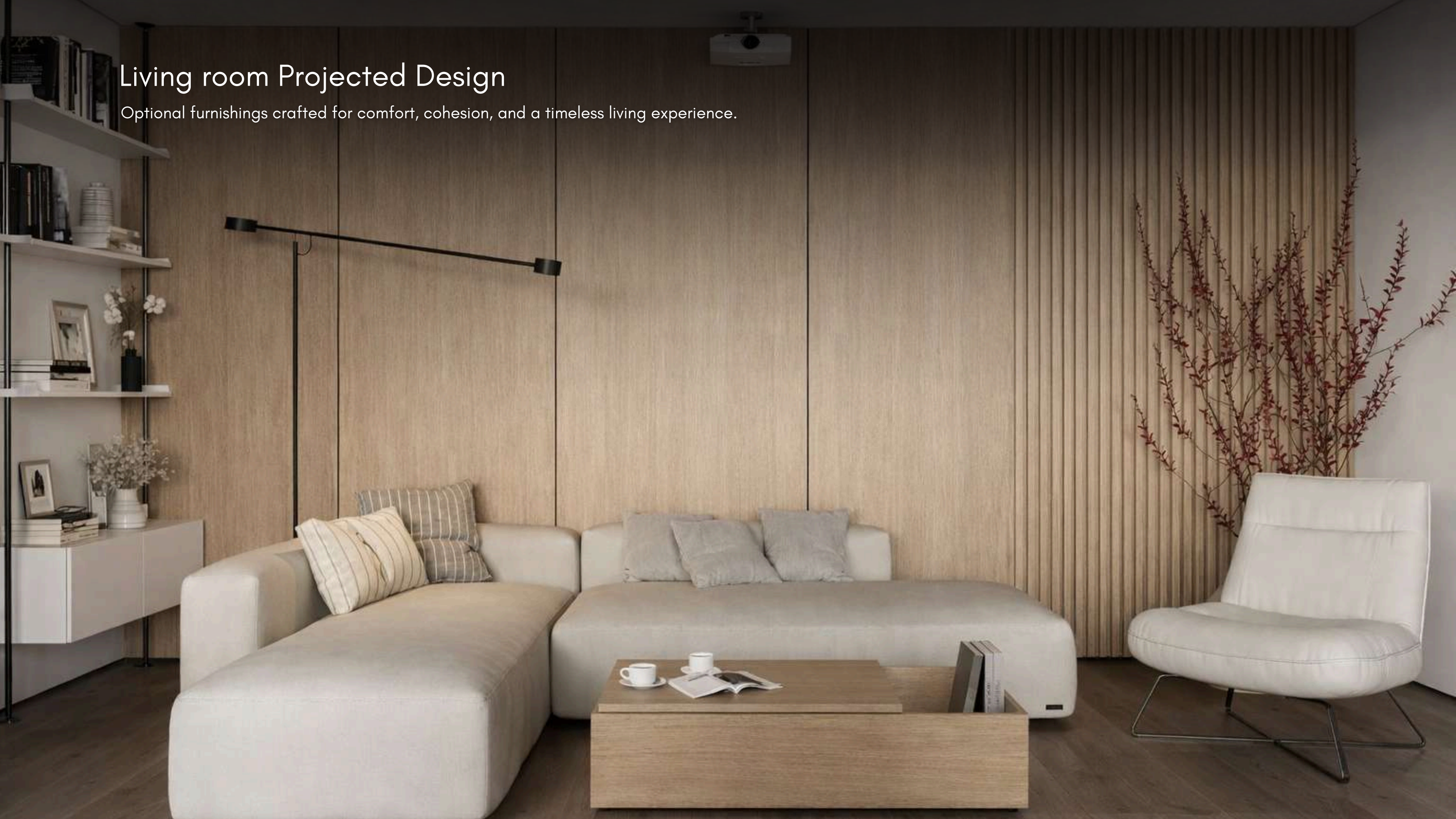
Optional Premium Furniture

Carefully selected premium furniture designed to complement the architecture. Each piece enhances comfort, functionality, and visual harmony within the space.



Living room Projected Design

Optional furnishings crafted for comfort, cohesion, and a timeless living experience.





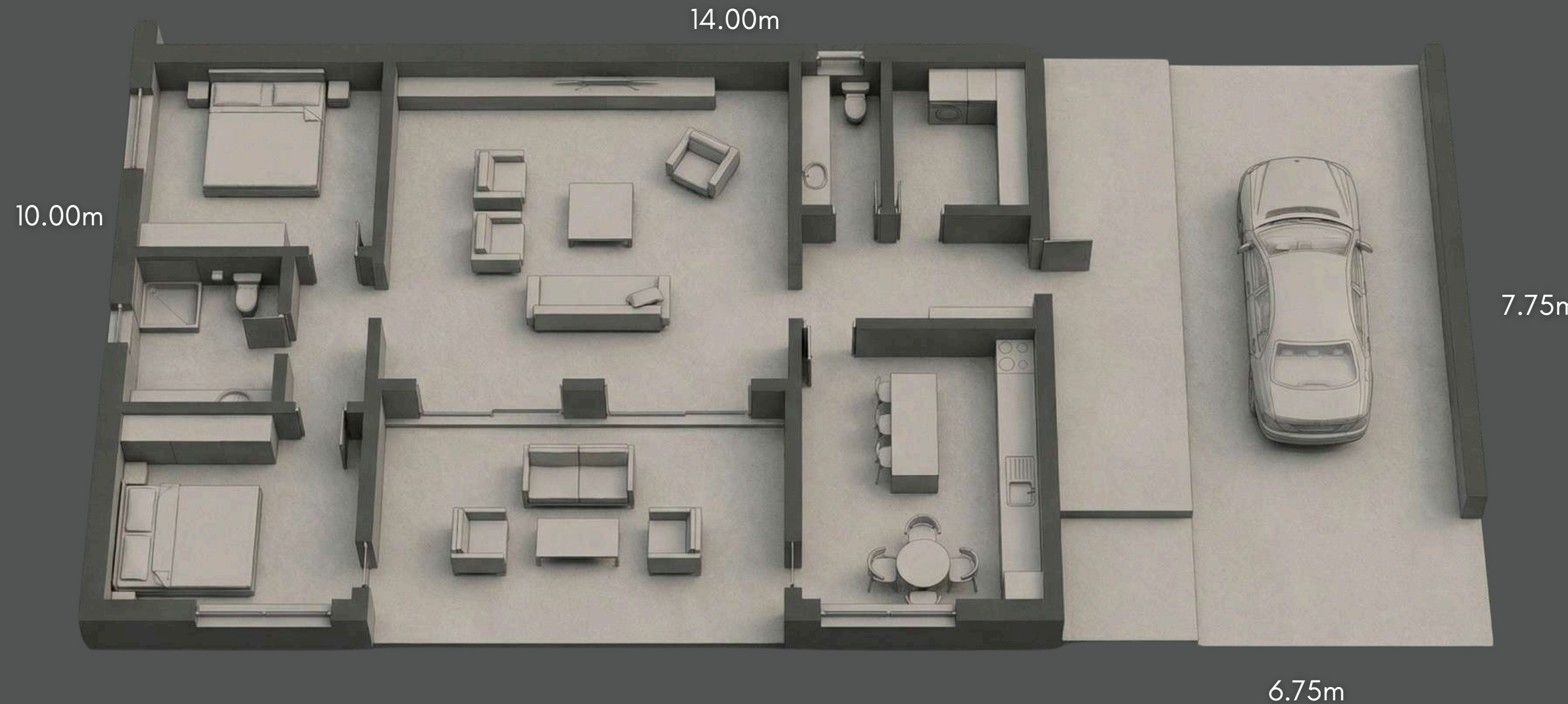
Kitchen with Island Design

Optional furnishings crafted for comfort, cohesion, and a timeless living experience.



ASTIBO LAYOUT

Ground Floor



No. | Room / Area | Net Area (m²)

1. Entrance Hall 6.69m²

2. Living Area 5.46m²

3. Toilet 3.21m²

4. Kitchen + Dining 17.68m²

5. Living Room 34.77m²

6. Corridor 3.34m²

7. Bedroom 11.71m²

8. Toilet 6m²

9. Bedroom 11.82m²

Total Building Net Area 100.68 m²

Total Building Gross Area 116 m²

Terrace 39.2 m²

ATTENTION: Pool is additional by request

Smart living. Built in.

Not a retrofit. No compromises.



Everything integrated. Not visible.



dHouse
be di erent

The future of living

valentino.ceo@dhouse.world

Croatia, Zagreb – Zagarova ul. 7, 10000

www.dhouse.world

+385 98 955 5276

A stylized, handwritten signature in white ink, likely belonging to Valentino, the CEO of dHouse.