

2026 MODULAR HOUSE KATA

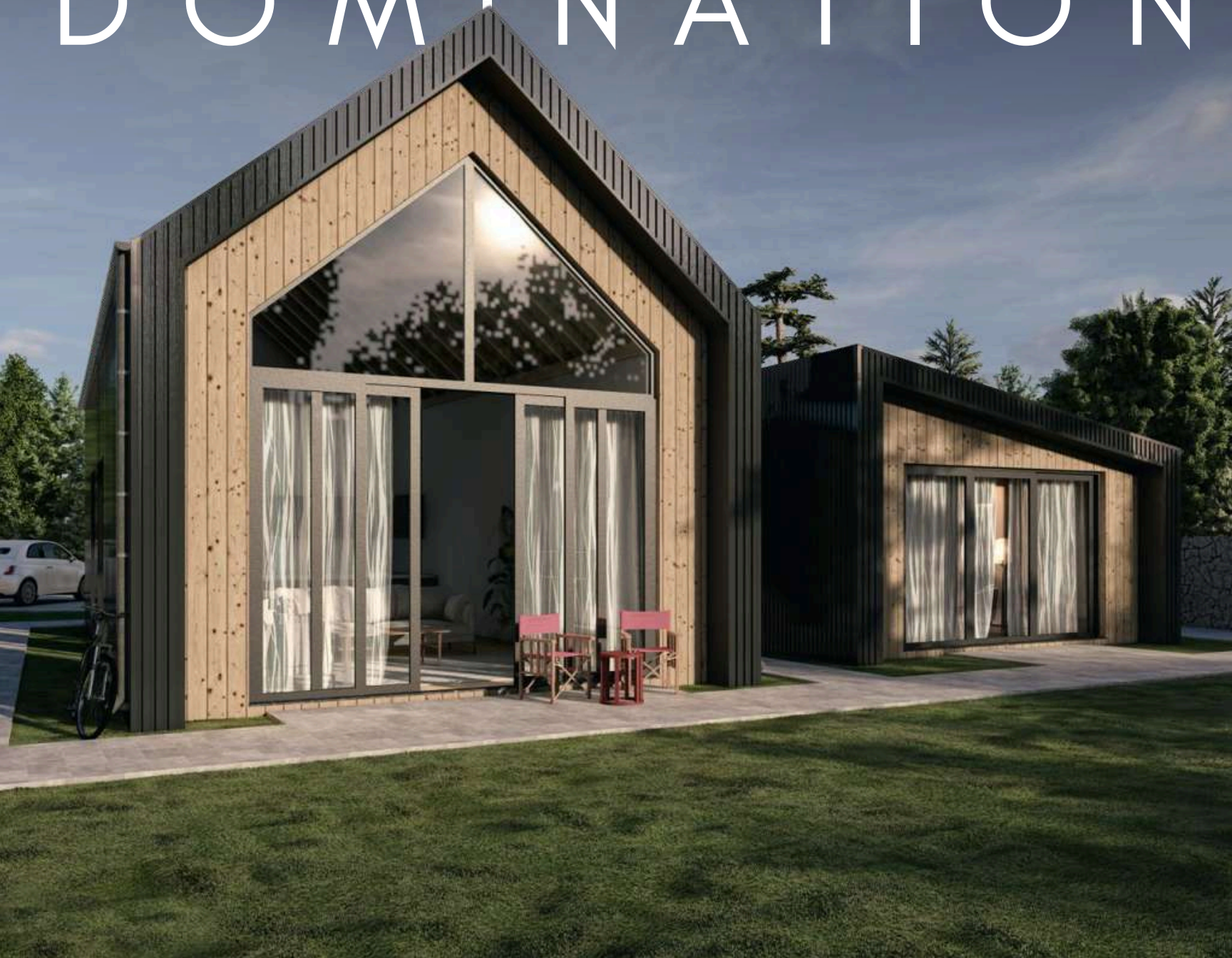


Sowing the foundation for sustainable living.

Designed with sustainability at their core, our wooden multifamily houses use renewable materials and smart design to deliver energy-efficient, low-impact living spaces. The natural warmth of wood creates an inviting atmosphere while contributing to a healthier environment. Each home is a step toward a more sustainable future and stronger, more conscious communities.



DOMINATION



High Ceiling

This home features a striking **high-pitched ceiling** where exposed wooden beams become a defining architectural element. The visible structure adds warmth, depth, and character, transforming the interior into an open, airy space with a strong connection to craftsmanship and nature.

Our modular homes are thoughtfully designed to simplify everyday life and create a better living experience for you.



Construction Planning

Careful planning is the foundation of every successful building project. From the initial site analysis and concept development to budgeting, material selection, and scheduling, each phase is defined with precision and clarity. Proper construction planning ensures efficient workflows, optimal use of resources, and seamless coordination between all disciplines involved.

The result is a well-structured process that minimizes risks, controls costs, and delivers high-quality, sustainable buildings on time and to the highest standards.

Be Green. Do green.
Safe Enviroment.

Tadao Ando:

“Good architecture makes
people feel good”

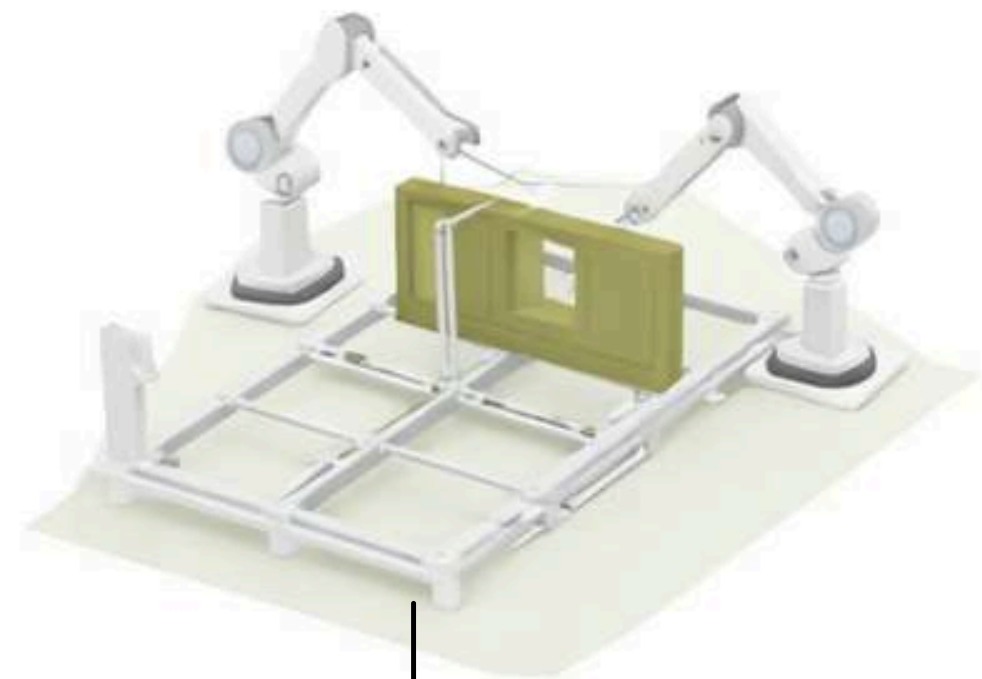


Eco, Bio & Green

Built with durability, energy efficiency, and modern lifestyles in mind, this home offers a perfect balance between functionality and design. Its modular construction allows flexibility in layout and adaptation to different locations, while maintaining a premium look and feel.



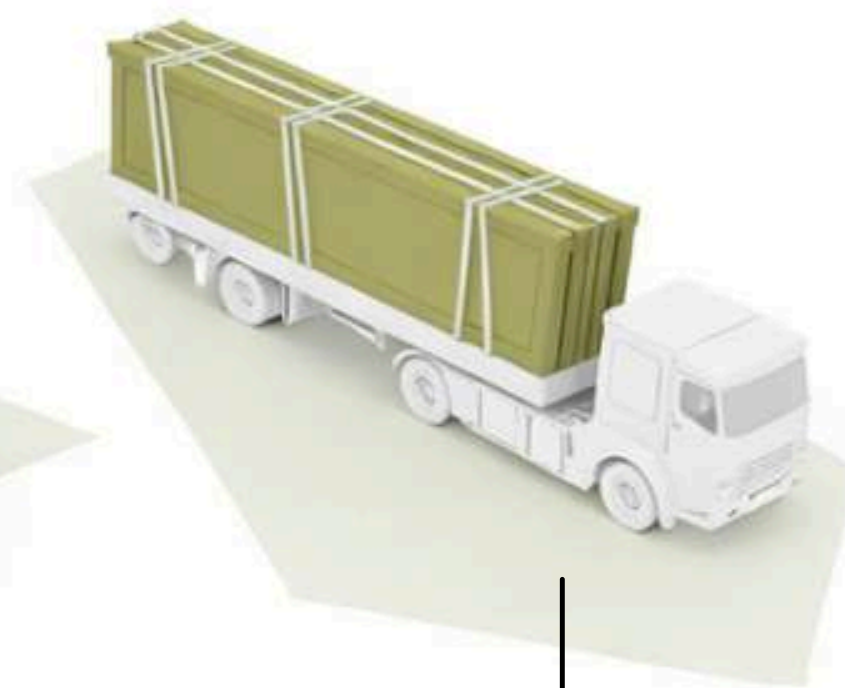
The Process - How it works?



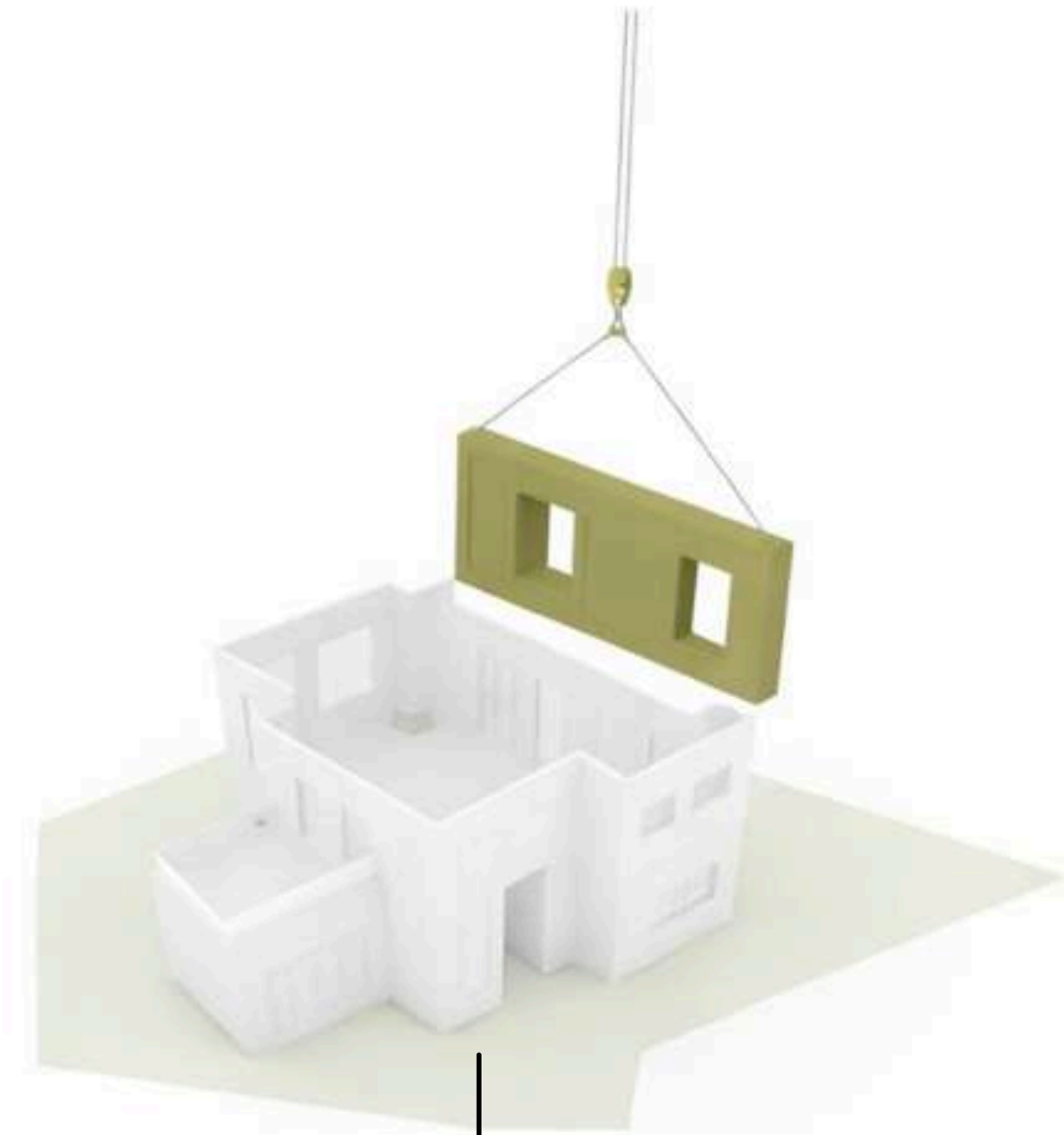
Fabricate



Load



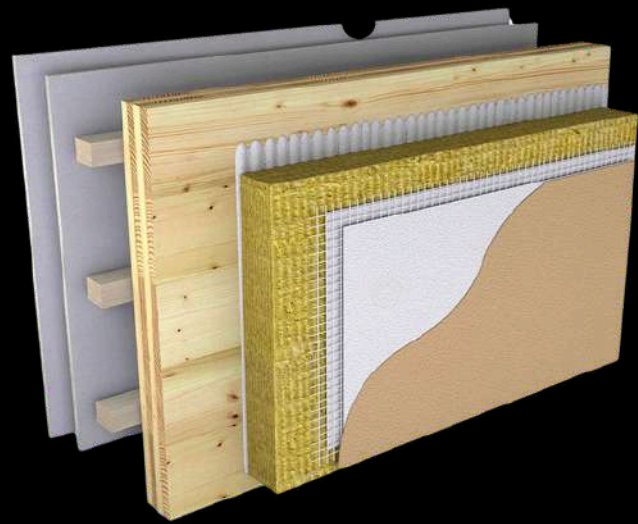
Transport



Assembly

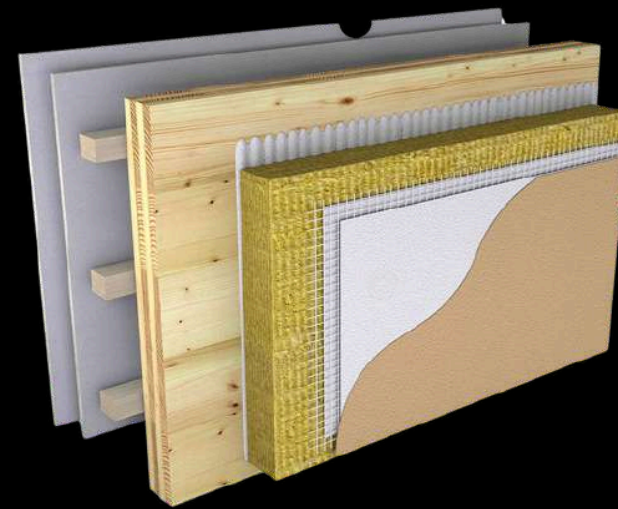
Construction System

Our building solutions are developed to adapt to a wide spectrum of architectural and structural applications. By relying on proven materials, trusted brands, and internationally approved standards such as **CE** and **ETA**, we ensure reliability, durability, and high performance in every project.



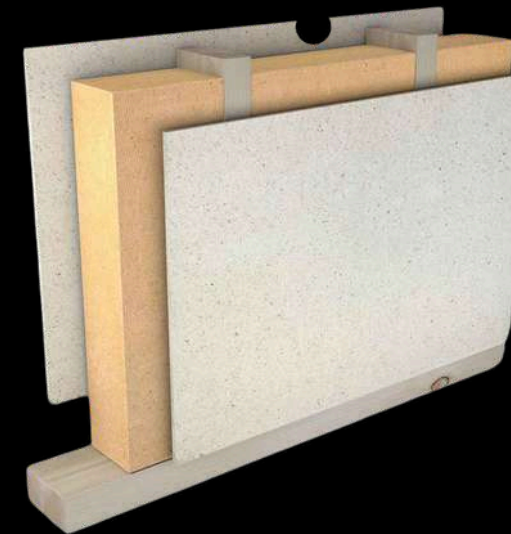
External wall

- 1 Metal / Wood
- 2 Reinforcement mesh
- 3 OSB board 12 mm
- 4 Thermal insulation (Tervol) 50 mm
- 5 Stone wool insulation 50 mm
- 6 Vapor barrier membrane
- 7 OSB board 12 mm
- 8 Timber structure 5 × 10 cm
- 9 Gypsum board 12.5 mm



External wall

- 1 Metal / Wood
- 2 Substructure and stone wool insulation 5 cm
- 3 OSB Board/3 Swiss - 15 mm
- 4 Thermal Insulation Tervol 5 cm
- 5 Vapor Barrier Foil
- 6 OSB Board/3 Swiss - 15 mm
- 7 Stone Wool Insulation 5 cm
- 8 Timber Structure 5 × 15 cm
- 9 Fire Resistant Gypsum Board 12.5 mm



Internal wall

- 1 Gypsum SonicBoard panel (acoustic) 12.5 mm
- 2 OSB board 12 mm
- 3 Thermal insulation (Tervol) 100 mm
- 4 Timber structure 10 × 5 cm - KVH
- 5 OSB board 12 mm
- 6 Gypsum SonicBoard board 12.5 mm OR
- 7 WPC Interior Board



Floor

- 1 Laminate AC5 - 12 mm
- 2 Felt underlay
- 3 Screed 5 cm
- 4 Nylon foil
- 5 Styrodur (XPS insulation) 2 cm



Construction System

Our building solutions are developed to adapt to a wide spectrum of architectural and structural applications. By relying on proven materials, trusted brands, and internationally approved standards such as **CE** and **ETA**, we ensure reliability, durability, and high performance in every project.

dHouse
be different

Equipped Bathrooms / Floor Heating Optional

- 1 Mirror
- 2 Concealed toilet cistern / Geberit
- 3 Cabin
- 4 Bath Furniture
- 5 Toilet bowl
- 6 Washbasin
- 7 Shower glass enclosure
- 8 Three types of tiles
- 9 Floor Heating - Optional



BEAUTY

KATA BACK VIEW

The exterior is defined by a clean, contemporary architectural language that emphasizes simplicity, balance, and connection to nature. The elongated single-level form creates a calm and elegant silhouette, while the combination of warm natural wood cladding and refined dark accents adds depth and character. Large glazed openings bring natural light into the interior and create a seamless transition between indoor and outdoor living spaces.

Blue Option

We can offer additional option based on your taste...

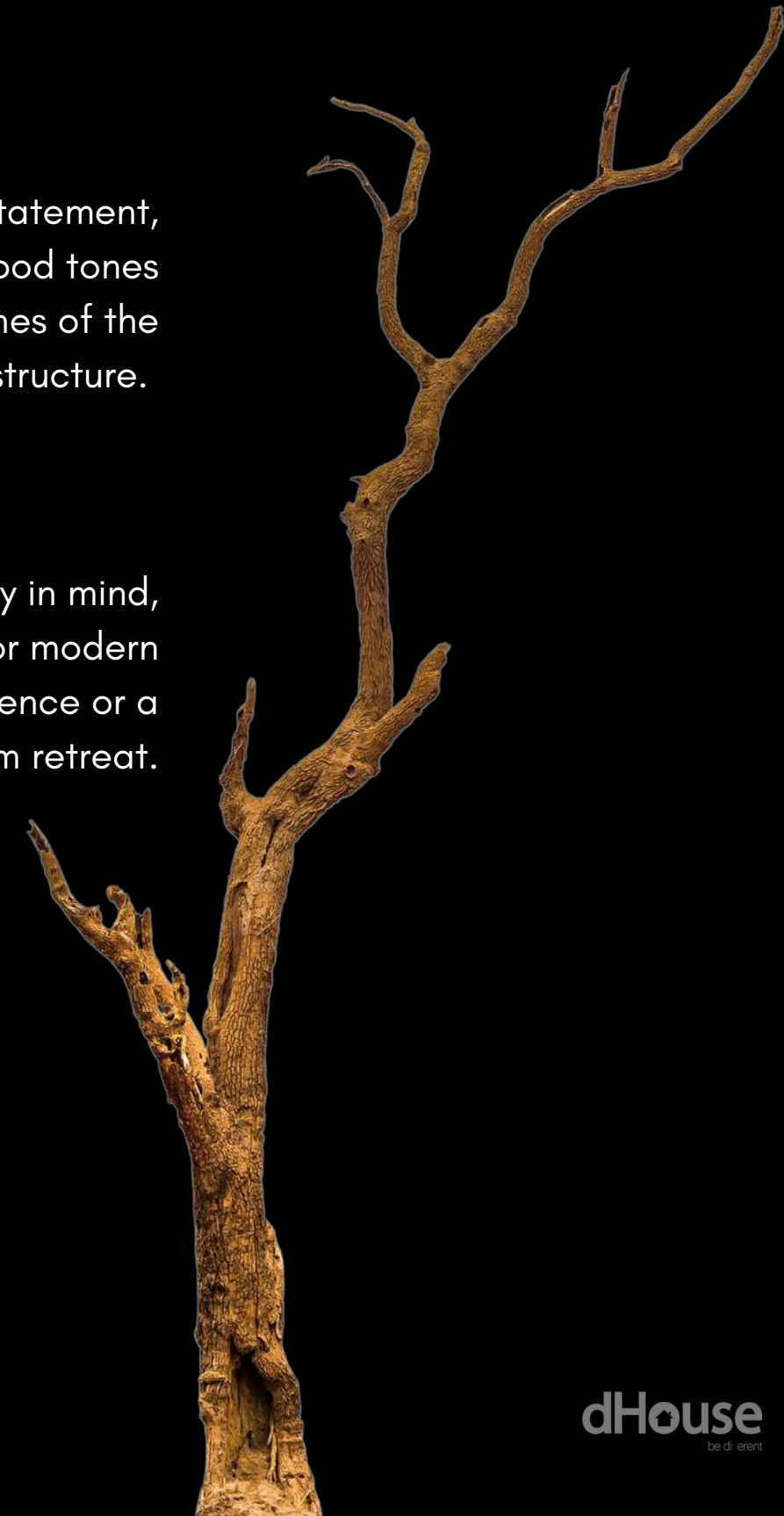


Contemporary Living in Harmony with Nature



The blue roof serves as a strong visual statement, contrasting beautifully with the natural wood tones and emphasizing the clean geometric lines of the structure.

Designed with both comfort and functionality in mind, this home offers a balanced layout ideal for modern lifestyles, whether as a permanent residence or a premium retreat.



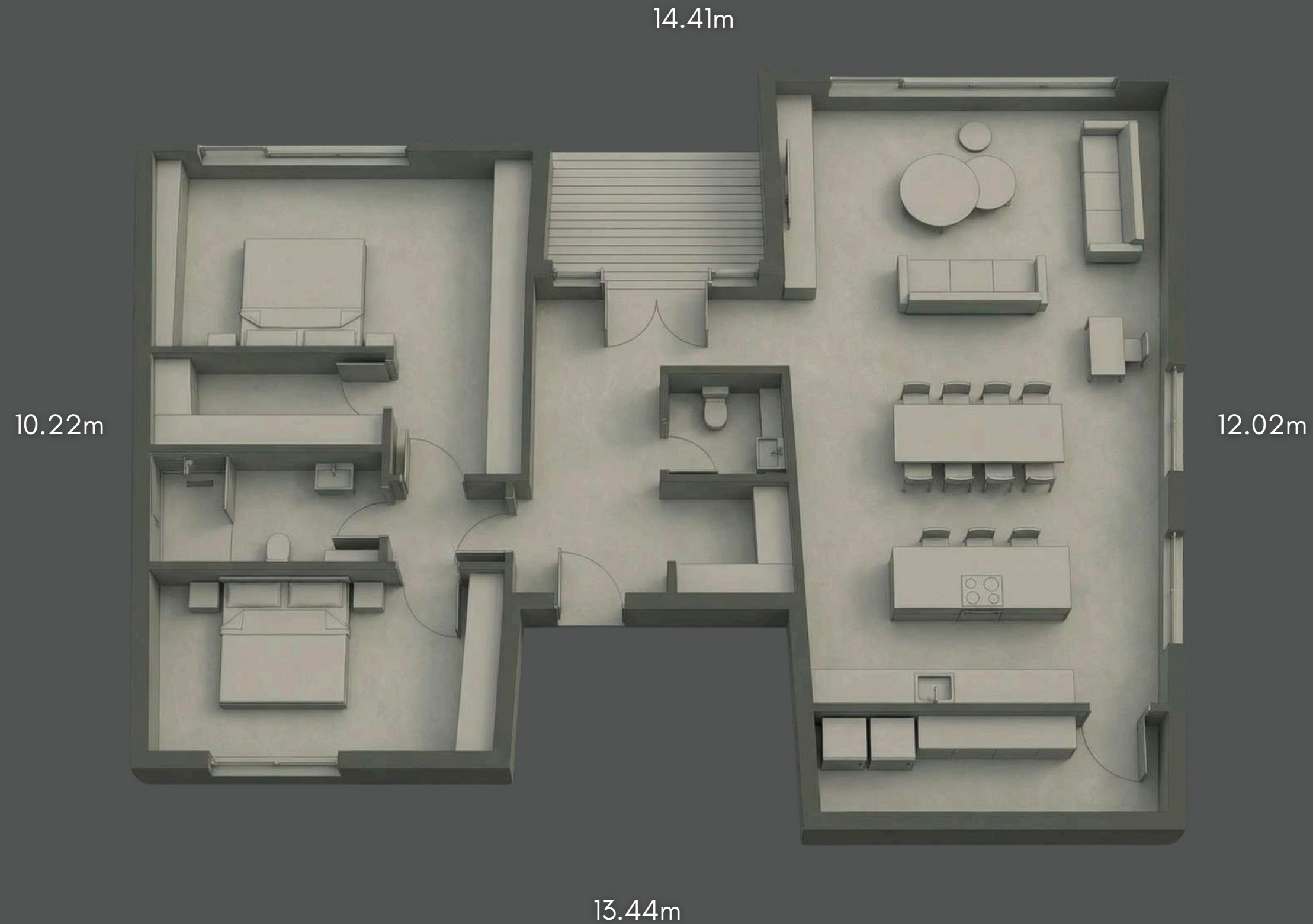
Choose PEACE

Optional furnishings crafted for comfort, cohesion, and a timeless living experience.



AMBROZIA LAYOUT

Ground Floor



No. | Room / Area | Net Area (m²)

1. Entrance Hall - 6.03 m²
2. Hallway - 7.01 m²
3. Guest Toilet - 2.70 m²
4. Living / Dining / Kitchen - 50.29 m²
5. Storage - 6.53 m²
6. Anteroom - 2.22 m²
7. Master Bedroom - 25.96 m²
8. Bathroom 2 - 5.85 m²
9. Guest Bedroom - 13.53 m²

Total Building NET area: 120.12 m²

Total Building GROSS area: 139.74 m²

Smart living. Built in.

Not a retrofit. No compromises.



Everything integrated. Not visible.



dHouse
be di erent

The future of living

valentino.ceo@dhouse.world

Croatia, Zagreb - Zagarova ul. 7, 10000

www.dhouse.world

+385 98 955 5276

A stylized, handwritten signature in white ink, consisting of a large initial 'V' followed by a series of loops and a long horizontal stroke.