

2026 MODULAR HOUSE MAGNOLIA



Mediterranean Villa – Where Light, Nature, and Timeless Elegance Meet

This Mediterranean villa is designed as a sanctuary of calm, elegance, and refined comfort. Inspired by traditional Mediterranean architecture, the villa blends natural materials, clean lines, and warm textures to create a harmonious connection between indoor and outdoor living.



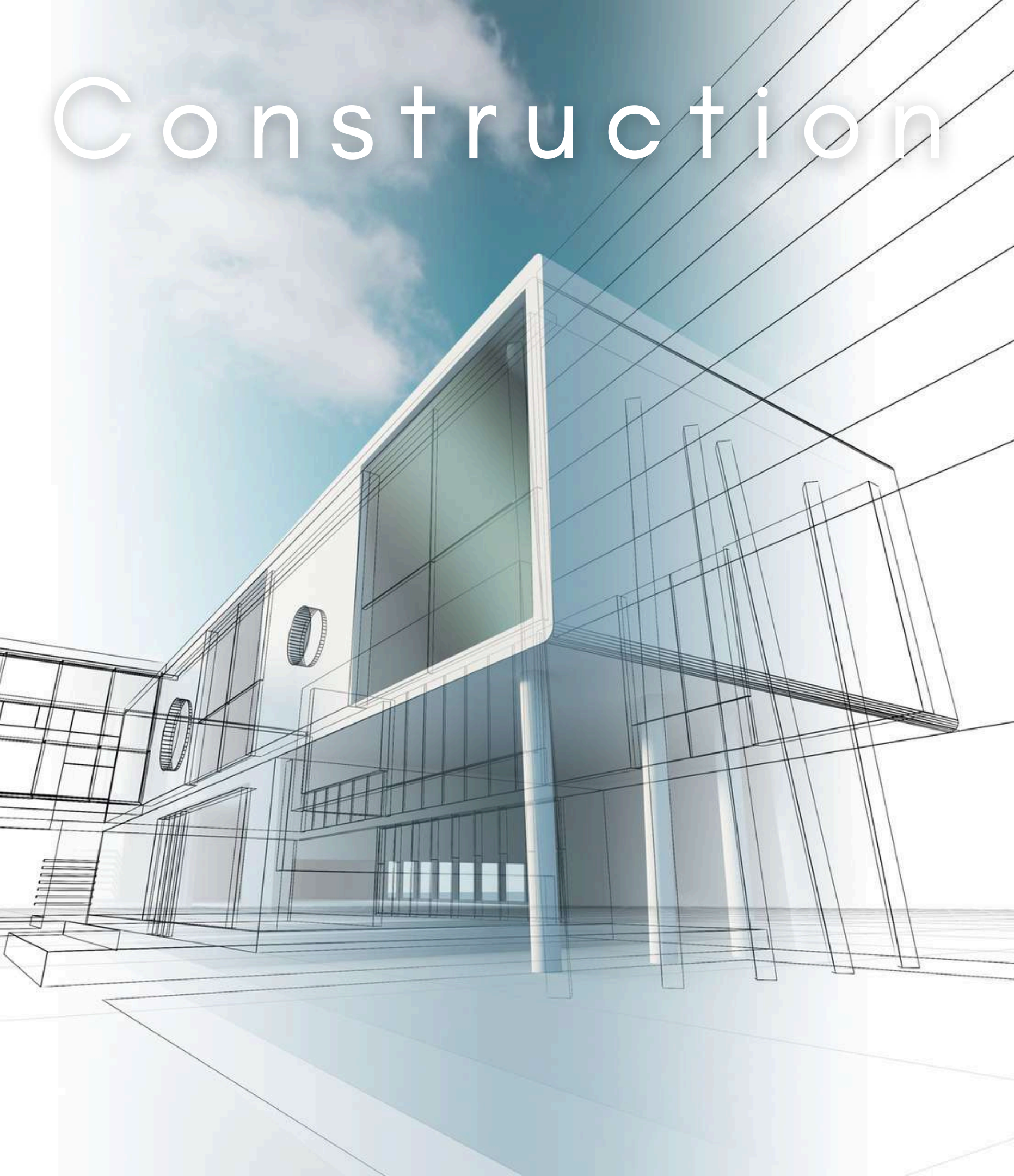
A place to disconnect from the world —
and reconnect with yourself.

Crafted from high-quality Austrian or Finnish wood, our modular homes combine Scandinavian strength
with modern design.

dHouse
be different



Construction Planning



Careful planning is the foundation of every successful building project. From the initial site analysis and concept development to budgeting, material selection, and scheduling, each phase is defined with precision and clarity. Proper construction planning ensures efficient workflows, optimal use of resources, and seamless coordination between all disciplines involved.

The result is a well-structured process that minimizes risks, controls costs, and delivers high-quality, sustainable buildings on time and to the highest standards.

Be Green. Do green.
Safe Environment.

Tadao Ando:

“Good architecture makes
people feel good”



Front View

A refined combination of light-colored facade panels and warm wood elements adds depth and contrast, while large floor-to-ceiling glass surfaces visually connect the interior spaces with the outdoor areas. The architecture emphasizes openness, light, and a seamless transition between inside and outside living.



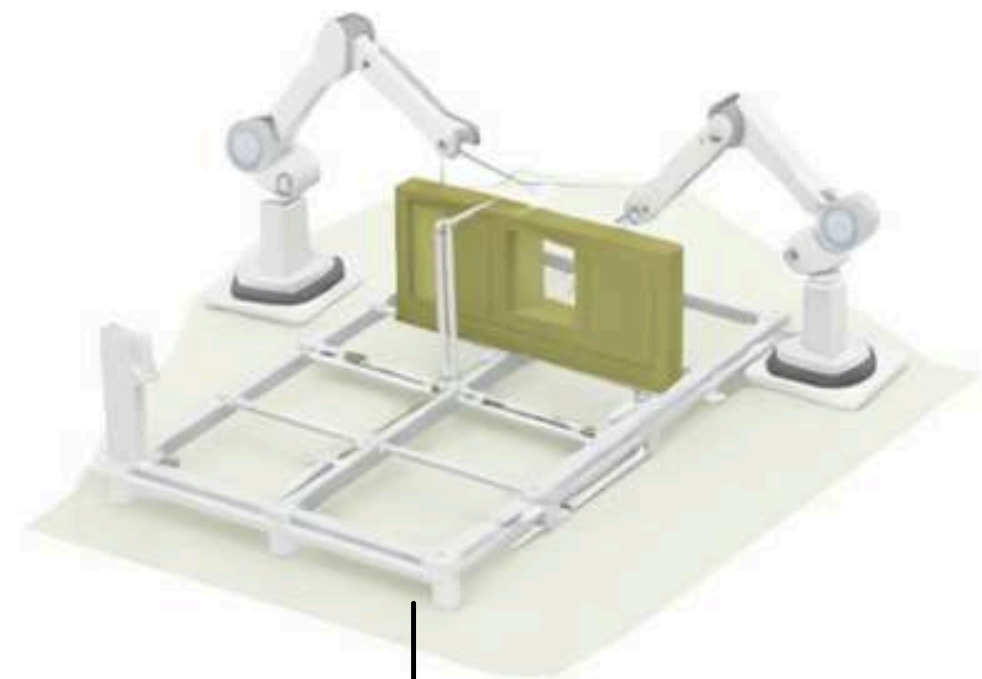
HOME OF DIFFERENT LEVEL

Neutral tones dominate the palette, enriched with soft beige, warm wood textures, and subtle fabric finishes. Built-in furniture and custom storage solutions provide both functionality and visual harmony, maintaining a clutter-free and elegant atmosphere.

Large glass facades invite the forest inside, while warm wooden interiors create a sense of shelter and calm.



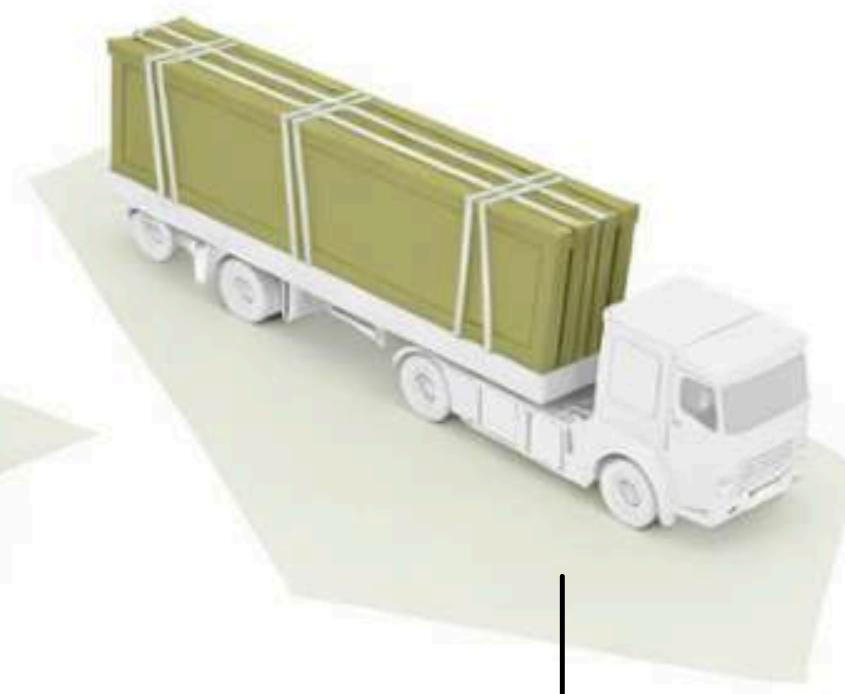
The Process - How it works?



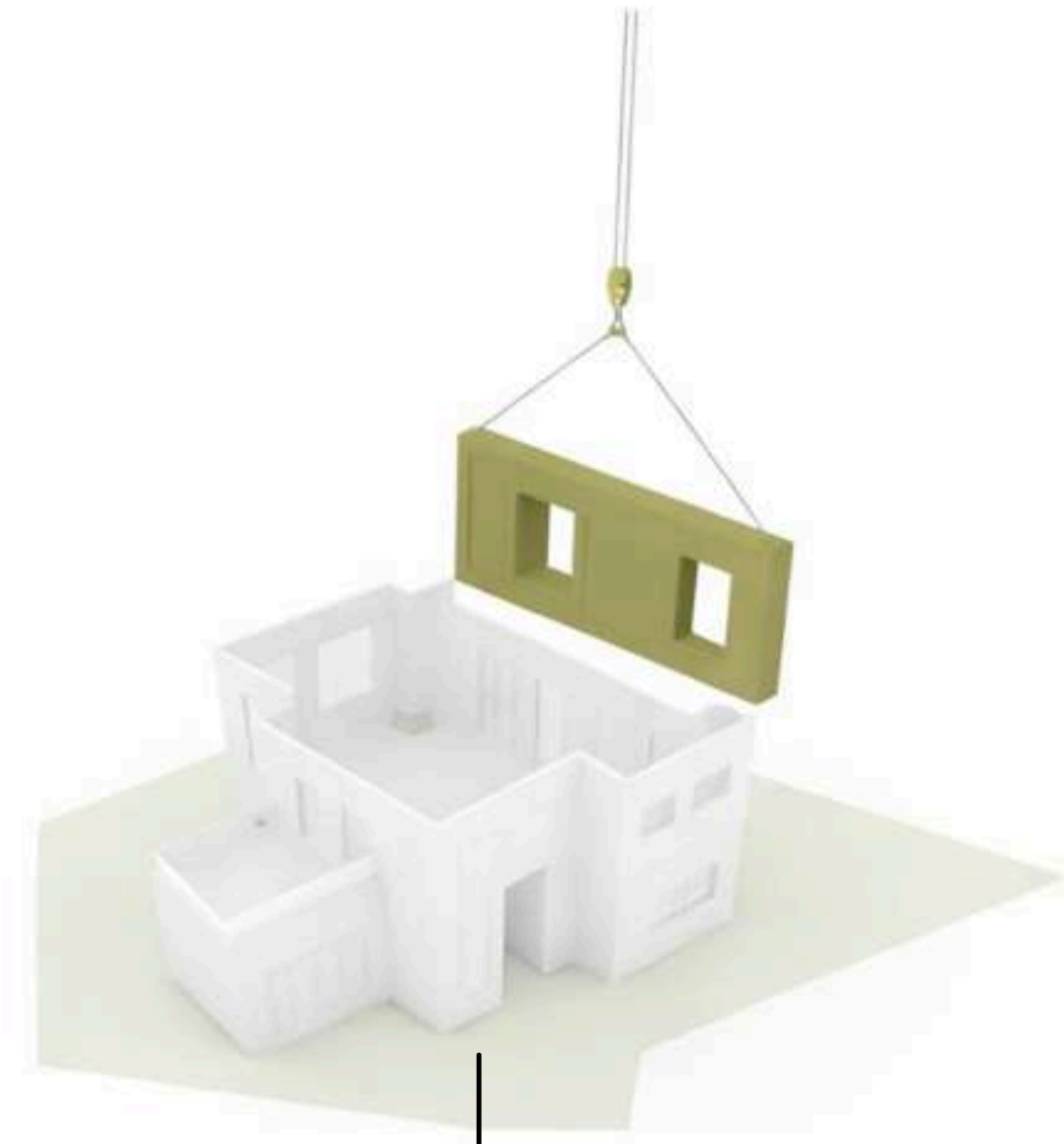
Fabricate



Load



Transport

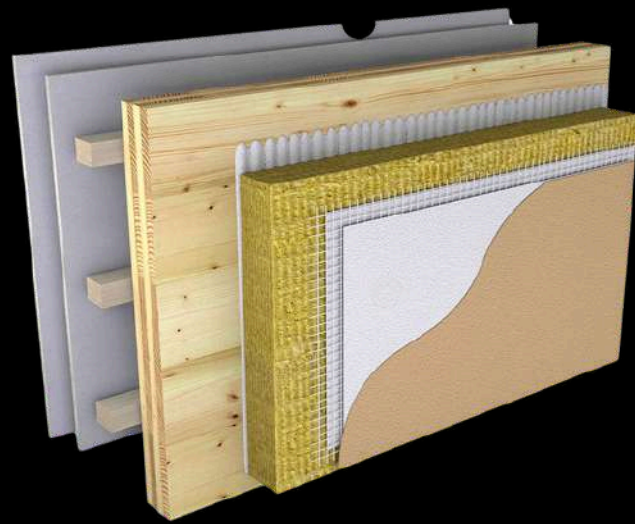


Assembly

Construction System

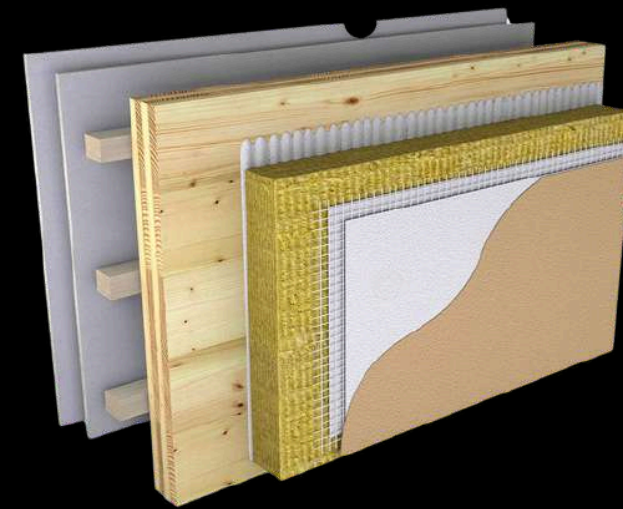
Our building solutions are developed to adapt to a wide spectrum of architectural and structural applications. By relying on proven materials, trusted brands, and internationally approved standards such as **CE** and **ETA**, we ensure reliability, durability, and high performance in every project.

dHouse
be different



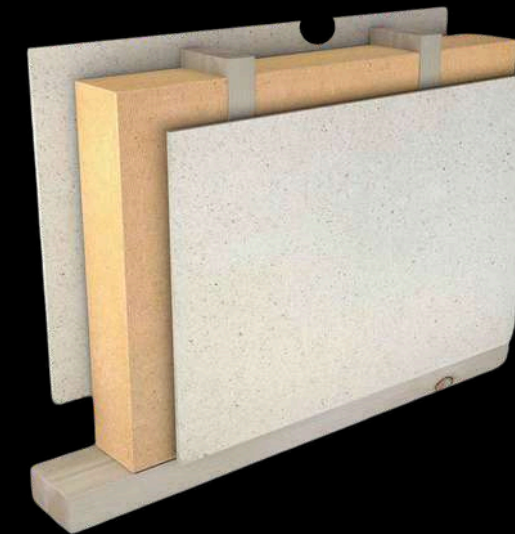
External wall

- 1 Fiber Cement / Wood
- 2 OSB board 12 mm
- 3 Thermal insulation (Tervol) 50 mm
- 4 Stone wool insulation 50 mm
- 5 Vapor barrier membrane
- 6 OSB board 12 mm
- 7 Timber structure 5 × 10 cm
- 8 Gypsum board 12.5 mm



External wall

- 1 HPL / Wood or Fiber Cement / Wood
- 2 Wool insulation 5 cm
- 3 OSB Board/3 Swiss - 15 mm
- 4 Thermal Insulation Tervol 5 cm
- 5 Vapor Barrier Foil
- 6 Stone Wool Insulation 5 cm
- 7 Timber Structure 5 × 10 cm



Internal wall

- 1 Gypsum SonicBoard panel (acoustic) 12.5 mm
- 2 OSB board 12 mm
- 3 Thermal insulation (Tervol) 100 mm
- 4 Timber structure 10 × 5 cm - KVH
- 5 OSB board 12 mm
- 6 Gypsum SonicBoard board 12.5 mm OR
- 7 WPC Interior Board



Floor

- 1 Laminate AC5 - 12 mm
- 2 Felt underlay
- 3 Screed 5 cm
- 4 Nylon foil
- 5 Styrodur (XPS insulation) 2 cm



Construction System

Our building solutions are developed to adapt to a wide spectrum of architectural and structural applications. By relying on proven materials, trusted brands, and internationally approved standards such as **CE** and **ETA**, we ensure reliability, durability, and high performance in every project.

dHouse
be different

Equipped Bathrooms / Floor Heating Optional

- 1 Mirror
- 2 Concealed toilet cistern / Geberit
- 3 Cabin
- 4 Bath Furniture
- 5 Toilet bowl
- 6 Washbasin
- 7 Shower glass enclosure
- 8 Three types of tiles
- 9 Floor Heating - Optional



MAGNOLIABACK VIEW

LIFE MEMORIES





Mediterranean ESPERANTO Villa

Surrounded by greenery and designed for privacy, the villa offers an atmosphere of effortless living — perfect for enjoying long summer days, peaceful evenings, and a lifestyle shaped by nature, comfort, and simplicity.

Every angle is purposeful, every space designed to feel open yet protected.



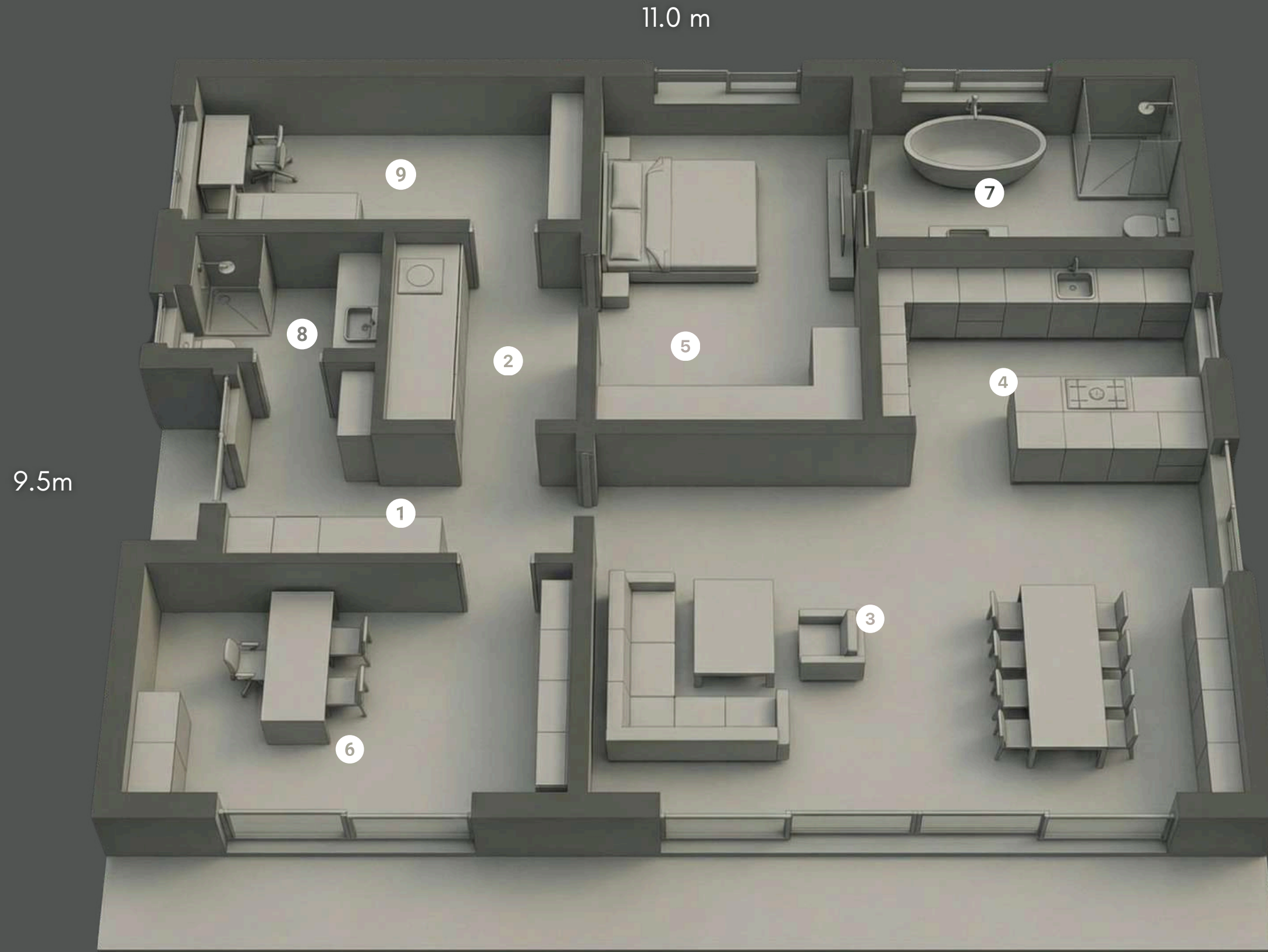
Designed for Families. Built for Generations.

A private residential concept where architecture, nature, and modern living meet in perfect harmony.
A curated neighborhood of premium wooden homes – unified in design, yet individual in character.

Built with high-quality Austrian or Finnish timber, each home reflects strength, sustainability, and timeless elegance.



MAGNOLIA LAYOUT



Ground Floor

No. | Room / Area | Net Area (m²)

1. Entrance / Hallway - 7.73 m²

2. Internal Corridor - 11.40 m²

3. Living Room (open concept) - 4.52 m²

4. Kitchen - 12.17 m²

5. Dining Area - 18.16 m²

6. Master Bedroom - 18.87 m²

7. Bathroom - 10.84 m²

8. Guest WC - 5.04 m²

9. Office / Bedroom 2 - 13.41 m²

Total Building Net Area: 102.14 m²

Gross Building Area: 114-116 m²

Choose PEACE

Optional furnishings crafted for comfort, cohesion, and a timeless living experience.



Smart living. Built in.

Not a retrofit. No compromises.



Everything integrated. Not visible.



dHouse
be di erent

The future of living

valentino.ceo@dhouse.world

Croatia, Zagreb - Zagarova ul. 7, 10000

www.dhouse.world

+385 98 955 5276

A stylized, handwritten signature in white ink, appearing to be 'Valentino', is located at the bottom right of the page.