

2026 MODULAR HOUSE NORD HAVEN



Mediterranean Villa – Where Light, Nature, and Timeless Elegance Meet

This Mediterranean villa is designed as a sanctuary of calm, elegance, and refined comfort. Inspired by traditional Mediterranean architecture, the villa blends natural materials, clean lines, and warm textures to create a harmonious connection between indoor and outdoor living.



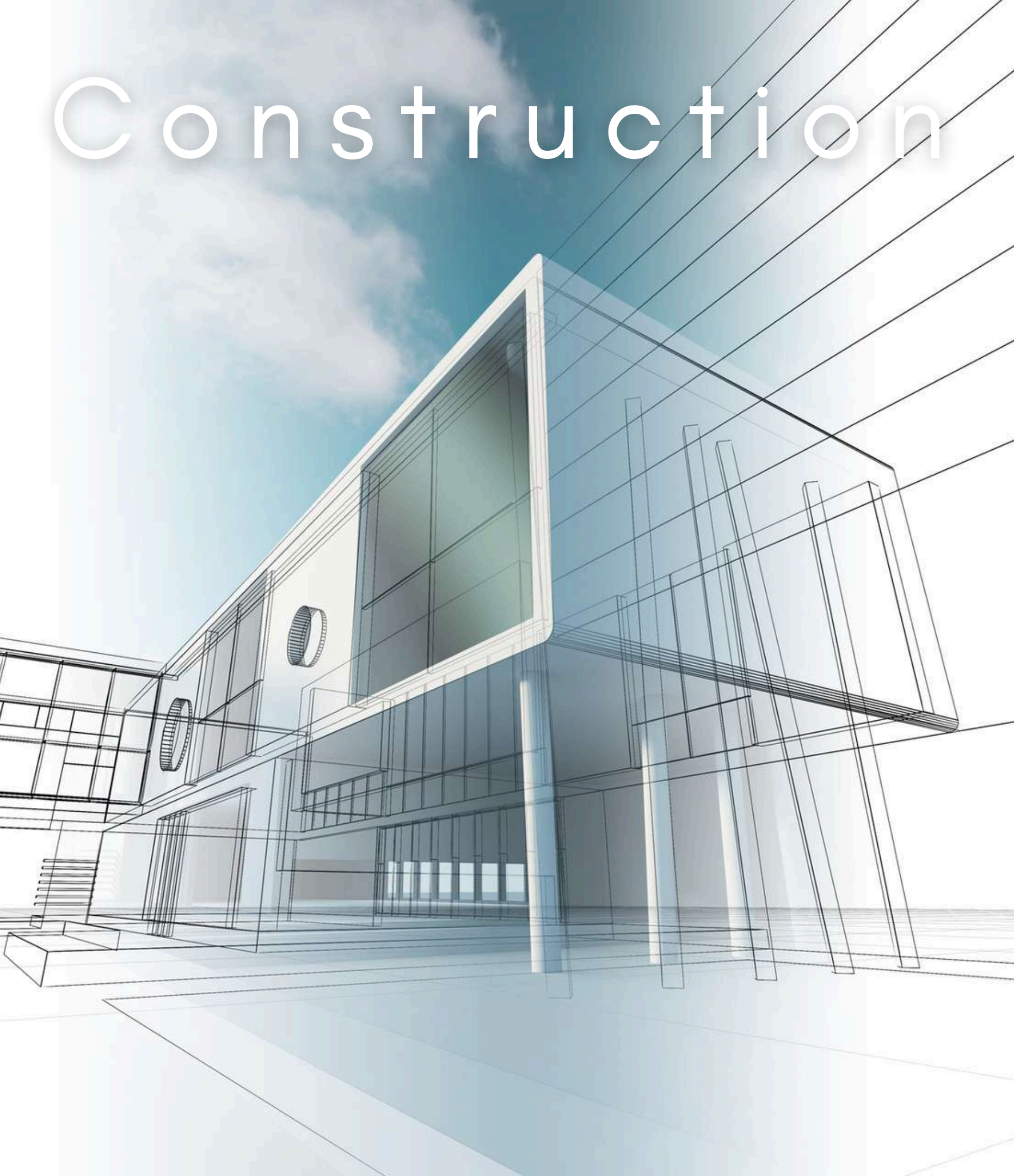
A place to disconnect from the world —
and reconnect with yourself.

Crafted from high-quality Austrian or Finnish wood, our modular homes combine Scandinavian strength
with modern design.

dHouse
be different



Construction Planning



Careful planning is the foundation of every successful building project. From the initial site analysis and concept development to budgeting, material selection, and scheduling, each phase is defined with precision and clarity. Proper construction planning ensures efficient workflows, optimal use of resources, and seamless coordination between all disciplines involved.

The result is a well-structured process that minimizes risks, controls costs, and delivers high-quality, sustainable buildings on time and to the highest standards.

Be Green. Do green.
Safe Enviroment.

Tadao Ando:

“Good architecture makes
people feel good”



Front View

This striking red house blends timeless Scandinavian charm with modern comfort. Its bold wooden façade and matching tiled roof create a warm, eye-catching presence that stands confidently against the surrounding greenery. Large windows invite natural light during the day and glow beautifully in the evening, giving the home a welcoming and cozy atmosphere.

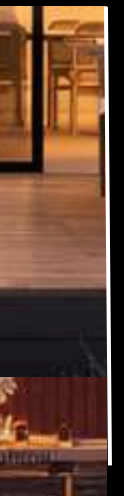


Nord Haven

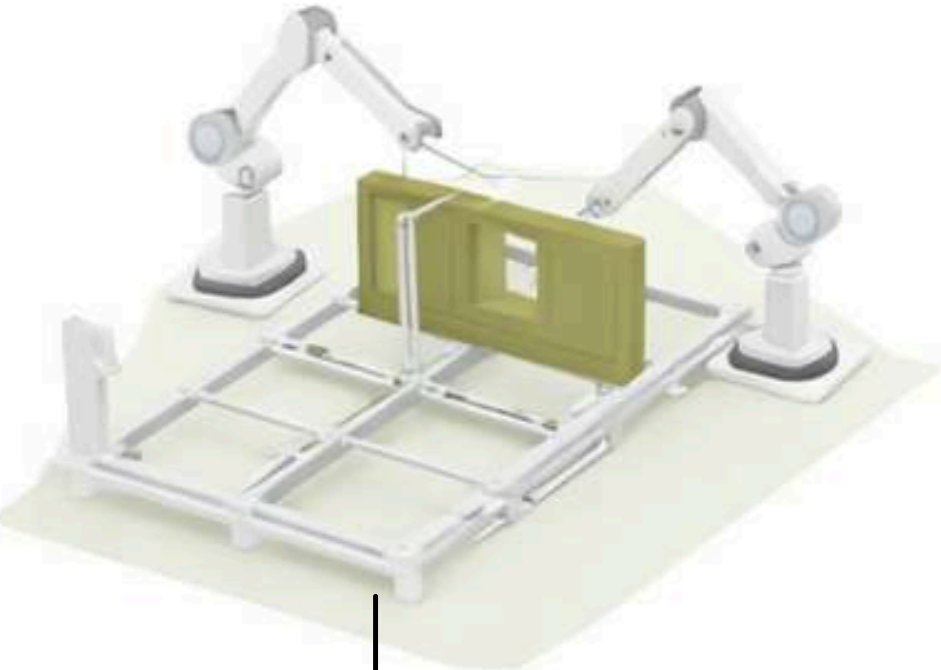
FOREST LINE RESIDENCE



This modern single-story home combines clean architectural lines with a warm, inviting atmosphere. The minimalist grey façade, clad in vertical metal panels, gives the house a sleek and contemporary identity, while large glass doors create a seamless connection between indoor and outdoor living.



The Process - How it works?



Fabricate



Load



Transport

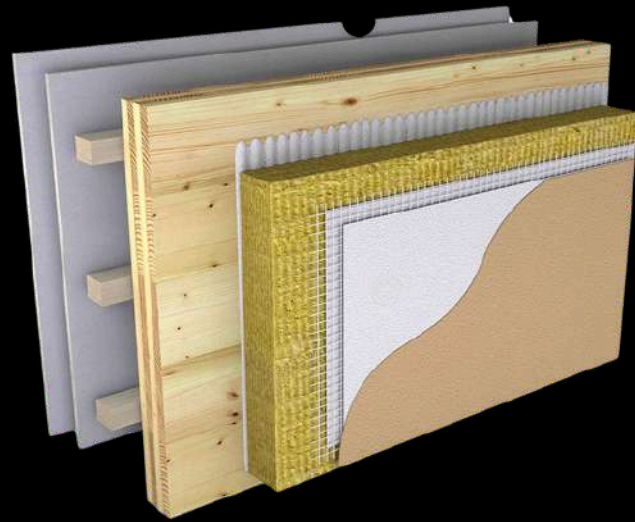


Assembly

Construction System

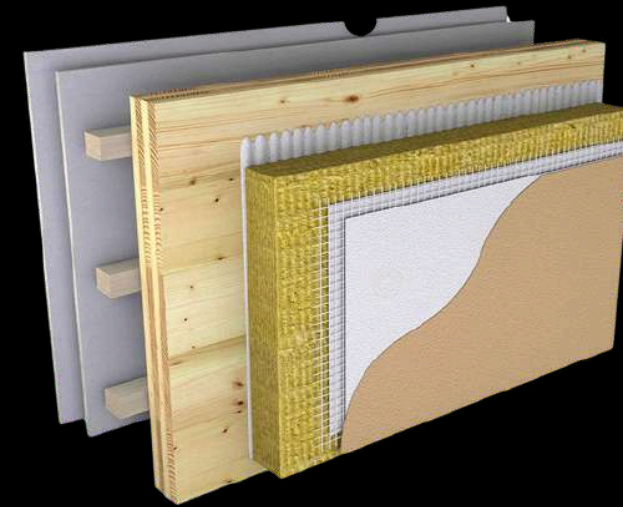
Our building solutions are developed to adapt to a wide spectrum of architectural and structural applications. By relying on proven materials, trusted brands, and internationally approved standards such as **CE** and **ETA**, we ensure reliability, durability, and high performance in every project.

dHouse
be different



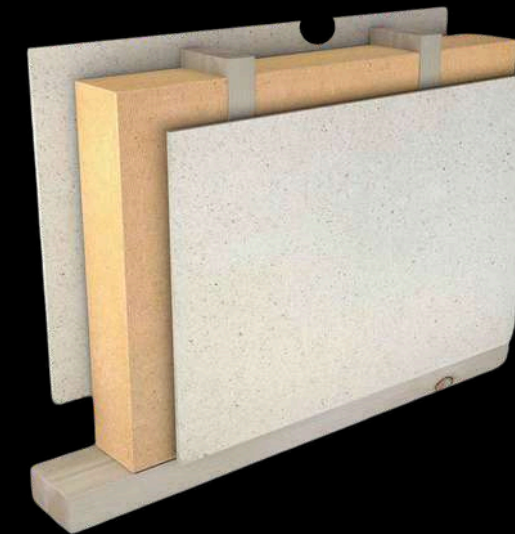
External wall

- 1 Grey Metal
- 2 OSB board 12 mm
- 3 Thermal insulation (Tervol) 50 mm
- 4 Stone wool insulation 50 mm
- 5 Vapor barrier membrane
- 6 OSB board 12 mm
- 7 Timber structure 5 × 10 cm
- 8 Gypsum board 12.5 mm



External wall

- 1 Grey Metal
- 2 Wool insulation 5 cm
- 3 OSB Board/3 Swiss - 15 mm
- 4 Thermal Insulation Tervol 5 cm
- 5 Vapor Barrier Foil
- 6 Stone Wool Insulation 5 cm
- 7 Timber Structure 5 × 10 cm



Internal wall

- 1 Gypsum SonicBoard panel (acoustic) 12.5 mm / Wood
- 2 OSB board 12 mm
- 3 Thermal insulation (Tervol) 100 mm
- 4 Timber structure 10 × 5 cm - KVH
- 5 OSB board 12 mm
- 6 Gypsum SonicBoard board 12.5 mm OR
- 7 WPC Interior Board



Floor

- 1 Laminate AC5 - 12 mm
- 2 Felt underlay
- 3 Screed 5 cm / Marble Screed
- 4 Nylon foil
- 5 Styrodur (XPS insulation) 2 cm



Construction System

Our building solutions are developed to adapt to a wide spectrum of architectural and structural applications. By relying on proven materials, trusted brands, and internationally approved standards such as **CE** and **ETA**, we ensure reliability, durability, and high performance in every project.

dHouse
be different

Equipped Bathrooms / Floor Heating Optional

- 1 Mirror
- 2 Concealed toilet cistern / Geberit
- 3 Cabin
- 4 Bath Furniture
- 5 Toilet bowl
- 6 Washbasin
- 7 Shower glass enclosure
- 8 Three types of tiles
- 9 Floor Heating - Optional





OUR SYSTEM

Laminated timber construction is a high-performance structural system made by bonding multiple layers of wood together under controlled pressure. The layers are glued in a way that increases strength, stability, and load-bearing capacity compared to solid timber. This process reduces natural wood imperfections and enhances durability, making the material highly reliable for residential and commercial buildings.

This process reduces natural wood imperfections and enhances durability, making the material highly reliable for residential and commercial buildings

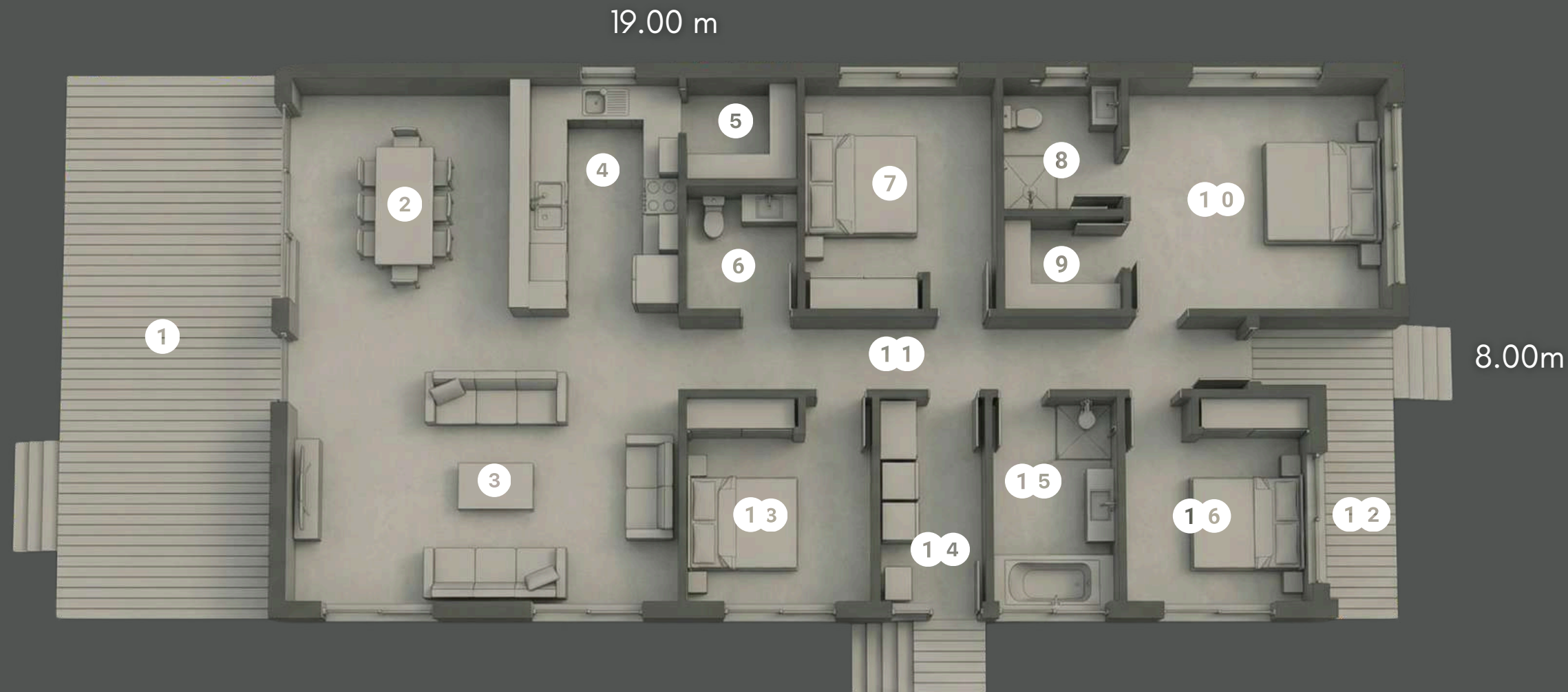
NORD HAVENBACK VIEW

DISCOVER



NORD HAVEN LAYOUT

Ground Floor



1. Pergola Deck = 31.50 m²

2. Meals = 14.70 m²

3. Living = 26.66 m²

4. Kitchen = 11.34 m²

5. Pantry = 3.06 m²

6. (PWD) = 3.60 m²

7. Bedroom 4 / Study = 11.78 m²

8. Bathroom 1 = 4.18 m²

9. Walk-in Robe (WIR) = 2.85 m²

10. Bedroom 1 = 15.96 m²

11. Hallway = 4.40 m²

12. Porch Deck = 2.76 m²

13. Bedroom 3 = 10.20 m²

14. Laundry = 5.78 m²

15. Bathroom 2 = 6.80 m²

16. Bedroom 2 = 10.20 m²

Total net internal area (without outdoor decks) 131.51 m²

Outdoor areas

Pergola Deck 31.50 m²

Porch Deck 2.76 m²

Total outdoor area 34.26 m²

Total area including decks 165.77 m²

Gross area 149 m² gross internal area

Including decks the total gross project size is 170 m²

Choose PEACE

Optional furnishings crafted for comfort, cohesion, and a timeless living experience.



Smart living. Built in.

Not a retrofit. No compromises.



Everything integrated. Not visible.



dHouse
be different

The future of living

valentino.ceo@dhouse.world

Croatia, Zagreb - Zagarova ul. 7, 10000

www.dhouse.world

+385 98 955 5276

A stylized, handwritten signature in white ink, likely belonging to Valentino, the CEO of dHouse.