



2026 MODULAR HOUSE NEREZI

THE FUTURE OF HOUSING IS BUILT OFF - SITE



LAMINATED WOOD & CONSTRUCTION



LAMINATED WOOD



dHouse



Back NEREZI Villa View

The exterior design features a minimalist white façade complemented by horizontal wooden cladding, adding warmth and a contemporary character. Large floor-to-ceiling windows allow abundant natural light to enter the interior while creating a seamless connection between indoor and outdoor spaces.

PEACE SEEKER



POOL View



SUSTAINABLE MATERIALS

THAT ACTUALLY LAST



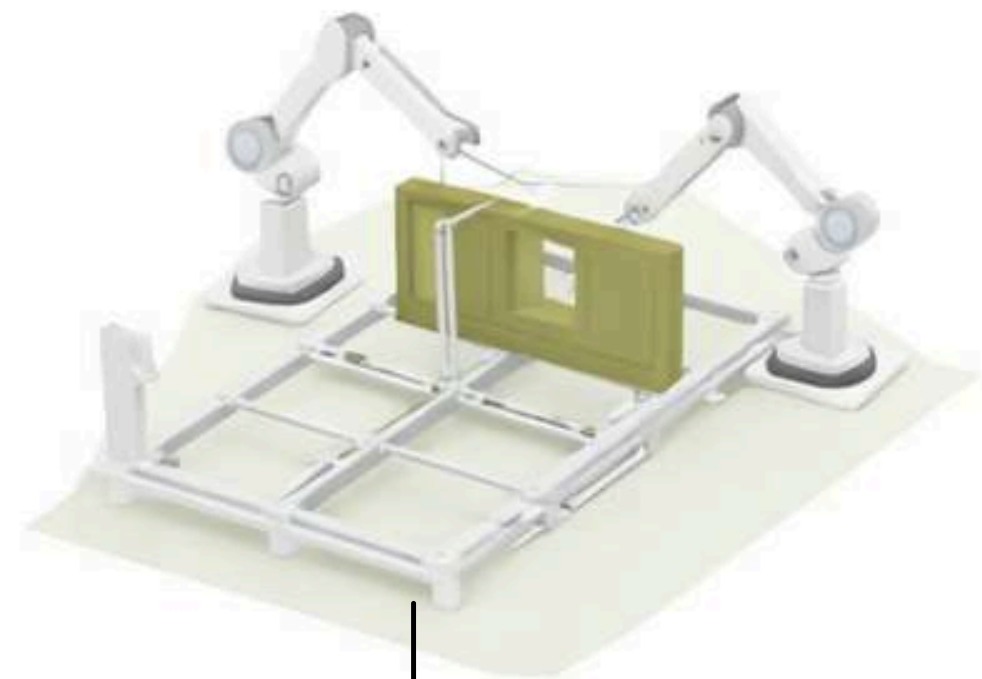

ENGINEERED
WOOD


RAMMED
EARTH


NATURAL
INSULATION

The ground floor opens onto a spacious terrace with a sleek pergola structure, providing shade and a comfortable outdoor seating area – ideal for relaxation or entertaining guests. The elevated entrance steps and geometric landscaping enhance the modern aesthetic of the home.

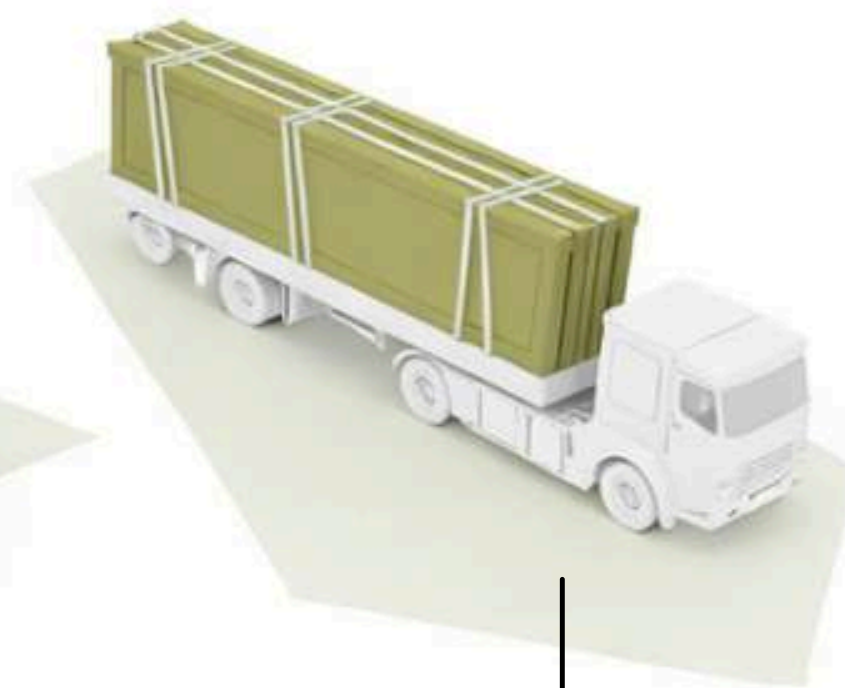
The Process - How it works?



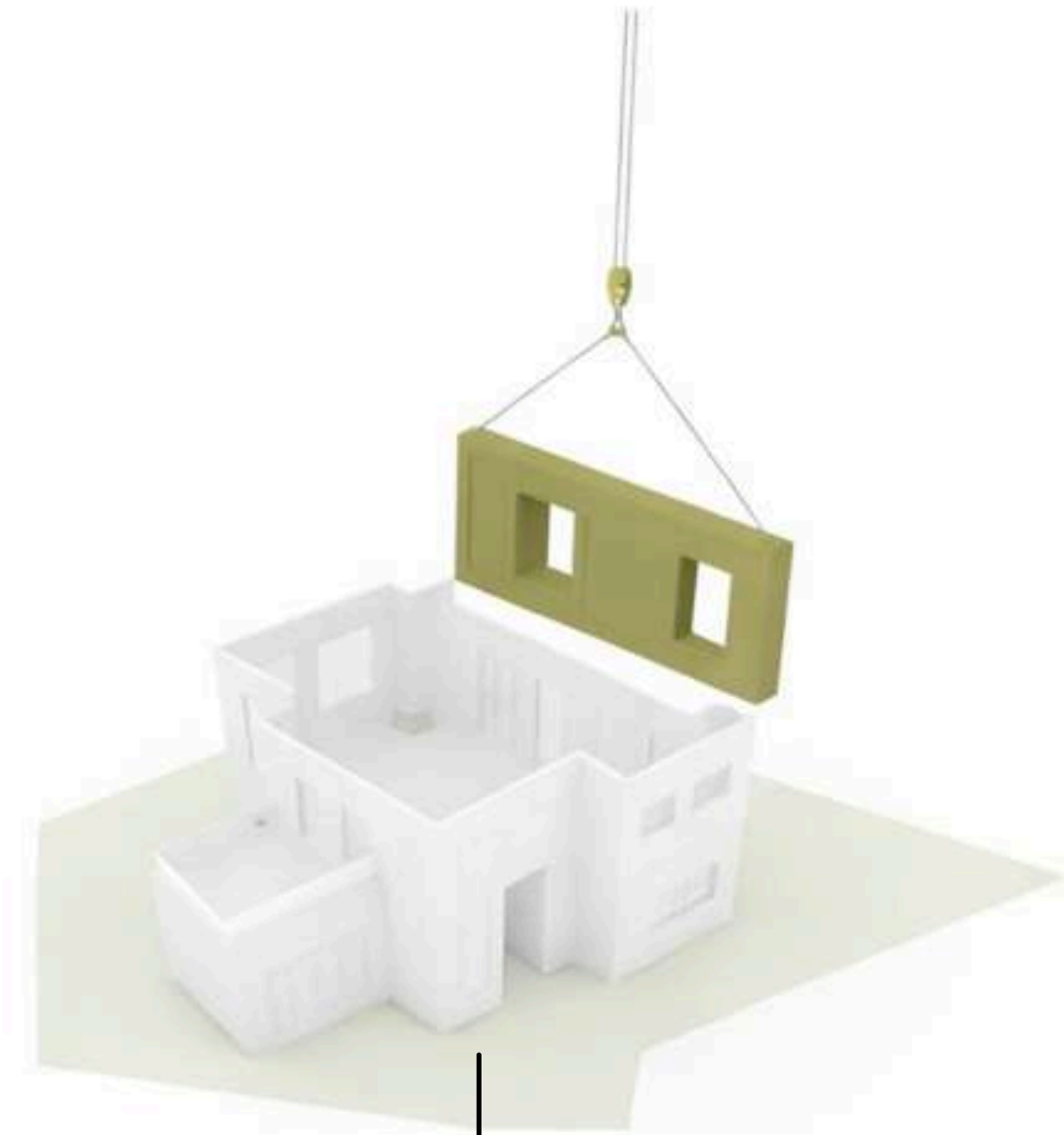
Fabricate



Load



Transport



Assembly

Construction System

Our building solutions are developed to adapt to a wide spectrum of architectural and structural applications. By relying on proven materials, trusted brands, and internationally approved standards such as **CE** and **ETA**, we ensure reliability, durability, and high performance in every project.



External wall

- 1 Fiber Cement/ Wood
- 2 Reinforcement mesh
- 3 OSB board 12 mm
- 4 Thermal insulation (Tervol) 50 mm
- 5 Stone wool insulation 50 mm
- 6 Vapor barrier membrane
- 7 OSB board 12 mm
- 8 Timber structure 5 × 10 cm
- 9 Gypsum board 12.5 mm



External wall

- 1 Brick / Wood
- 2 Substructure and stone wool insulation 5 cm
- 3 OSB Board/3 Swiss - 15 mm
- 4 Thermal Insulation Tervol 5 cm
- 5 Vapor Barrier Foil
- 6 OSB Board/3 Swiss - 15 mm
- 7 Stone Wool Insulation 5 cm
- 8 Timber Structure 5 × 15 cm
- 9 Fire Resistant Gypsum Board 12.5 mm



Internal wall

- 1 Gypsum SonicBoard panel (acoustic) 12.5 mm
- 2 OSB board 12 mm
- 3 Thermal insulation (Tervol) 100 mm
- 4 Timber structure 10 × 5 cm - KVH
- 5 OSB board 12 mm
- 6 Gypsum SonicBoard board 12.5 mm OR
- 7 WPC Interior Board



Floor

- 1 Laminate AC5 - 12 mm
- 2 Felt underlay
- 3 Screed 5 cm
- 4 Nylon foil
- 5 Styrodur (XPS insulation) 2 cm



OUR SYSTEM

SUSTAINABLE MATERIALS

THAT ACTUALLY LAST



ENGINEERED
WOOD



RAMMED
EARTH



NATURAL
INSULATION



Construction System

Our building solutions are developed to adapt to a wide spectrum of architectural and structural applications. By relying on proven materials, trusted brands, and internationally approved standards such as **CE** and **ETA**, we ensure reliability, durability, and high performance in every project.

Equipped Bathrooms / Floor Heating Optional

- 1 Mirror
- 2 Concealed toilet cistern / Geberit
- 3 Cabin
- 4 Bath Furniture
- 5 Toilet bowl
- 6 Washbasin
- 7 Shower glass enclosure
- 8 Three types of tiles
- 9 Floor Heating - Optional



Construction System

Our building solutions are developed to adapt to a wide spectrum of architectural and structural applications. By relying on proven materials, trusted brands, and internationally approved standards such as **CE** and **ETA**, we ensure reliability, durability, and high performance in every project.

Floor Heating Details:

- 1 12- 24V
- 2 0.2mm Thick
- 3 Under: Laminate, Wood or Tile
- 4 For inside or Outside usage
- 5 30sqm = 2,5Kw Power instalment
- 6 One day instalment
- 7 25 Years of Guarntee
- 8 No Maintaince needed
- 9 Optional for order

<https://ecomaxx.dhouse.mk/>

ALLOY FOIL HEATING

12-24V

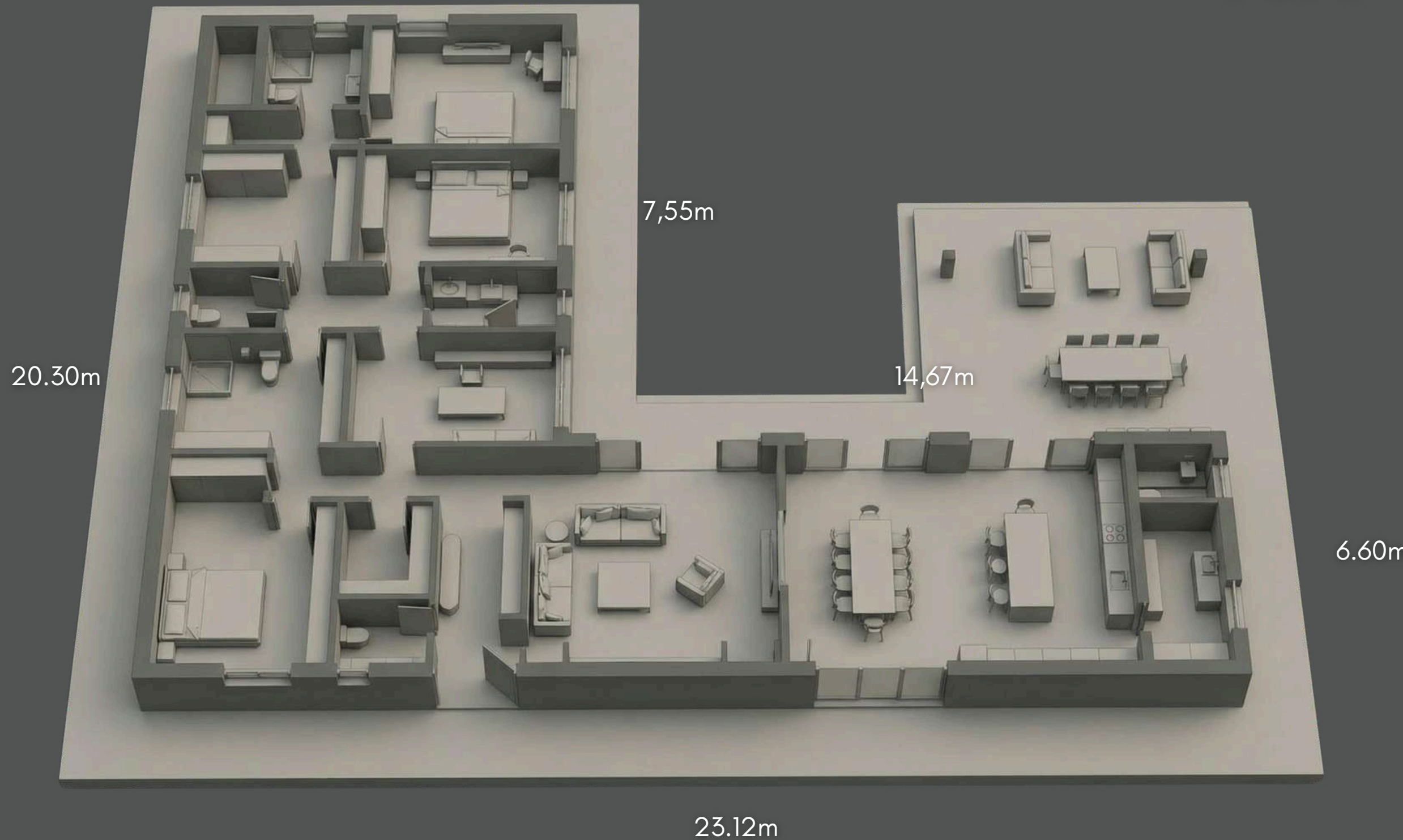


A modern, single-story house with a brick exterior and a large glass window. The house is set against a sunset sky. In the foreground, there is a paved walkway with several small, glowing square lights. To the right, a vertical garden with various green plants is visible. The word "DISCOVER" is overlaid in large, white, sans-serif capital letters across the middle of the image.

DISCOVER

NEREZI LAYOUT

Ground Floor



1. ENTRANCE - 8.1 m²
 2. TOILET - 3.1 m²
 3. WARDROBE - 4.6 m²
 4. UTILITY ROOM - 5.5 m²
 5. MECHANICAL ROOM - 3.6 m²
 6. LIVING ROOM - 31 m²
 7. DINING ROOM - 21.7 m²
 8. KITCHEN - 21.7 m²
 9. STORAGE - 7.8 m²
 10. TOILET - 2.8 m²
 11. HALLWAY - 5.1 m²
 12. OFFICE - 17.3 m²
 13. BATHROOM - 5 m²
 14. CHILDREN'S ROOM - 16.5 m²
 15. MASTER BEDROOM - 19.7 m²
 16. BATHROOM - 5.7 m²
 17. WALK-IN CLOSET - 8 m²
 18. ENTRY HALL - 6.7 m²
 19. WALK-IN CLOSET - 8.3 m²
- TOTAL NET AREA - 202 m²
 - TOTAL GROSS AREA - 254 m²



EXCLUSIVE Villa

Surrounded by greenery and designed for privacy, the villa offers an atmosphere of effortless living — perfect for enjoying long summer days, peaceful evenings, and a lifestyle shaped by nature, comfort, and simplicity.

Every angle is purposeful, every space designed to feel open yet protected.



Choose PEACE

Optional furnishings crafted for comfort,
cohesion, and a timeless living experience.



Smart living. Built in.

Not a retrofit. No compromises.



Everything integrated. Not visible.



dHouse
be different

The future of living

valentino.ceo@dhouse.world

Croatia, Zagreb - Zagarova ul. 7, 10000

www.dhouse.world

+385 98 955 5276

A stylized, handwritten signature in white ink, appearing to be 'Valentino', is located at the bottom right of the page.