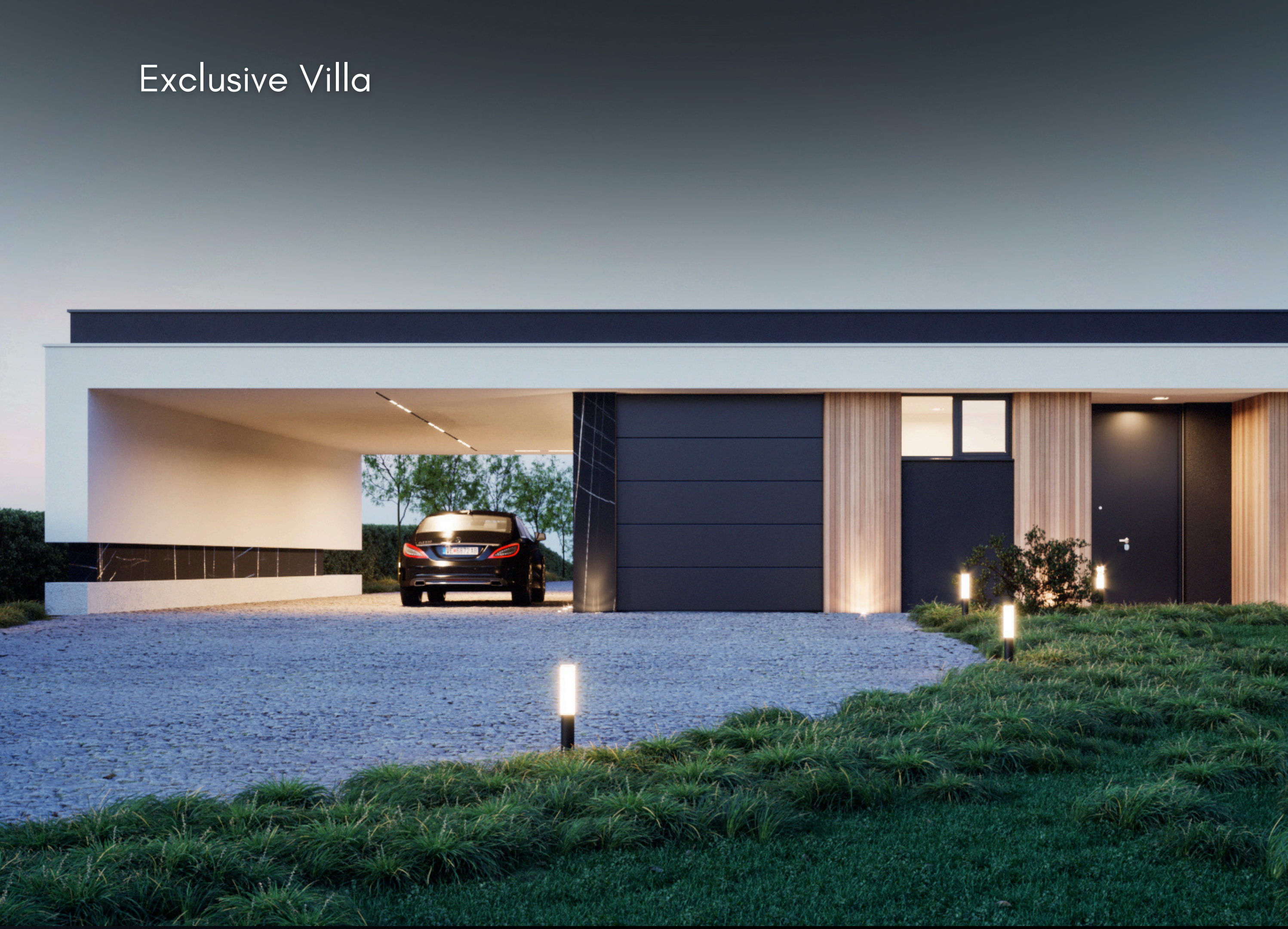


2026 MODULAR HOUSE RBK



dHouse
be different

Exclusive Villa



Modul Solution

Our modular and panel construction concepts are designed to deliver long-lasting value, economic efficiency, and optimized functionality.

Through the intelligent combination of innovative building systems and adaptable architectural design, we create housing solutions that respond to modern needs and future demands.

dHouse
be di erent

discover your vision



Climate conditions are no challenge for these homes. They are engineered with advanced, high-performance wall systems that deliver exceptional energy efficiency.

By using off-site construction methods, we ensure superior build quality while minimizing environmental impact. This process optimizes resource use, reduces waste, and allows materials to be reused and recycled efficiently.

GREEN ENVIROMENT

Our homes are designed to withstand extreme weather and environmental changes. They offer generous, customizable living spaces and can be completed in a fraction of the time required for conventional construction.

“Step into a new way of living — where comfort meets distinctive design, outstanding efficiency, and uncompromising quality”.



dHouse
be different

Exclusive Villa

RBK BACK VIEW

Every detail is crafted to the highest standard, from premium materials and bespoke finishes to thoughtfully designed living areas that balance sophistication and warmth. The open-plan living, dining, and kitchen spaces flow effortlessly, offering both elegance for entertaining and serenity for everyday life.

Private rooms provide a peaceful retreat, combining comfort, privacy, and timeless design. Generous outdoor areas extend the living experience, inviting moments of relaxation, reflection, and connection with nature.

dHouse
be different

Exclusive Villa



Built using our advanced prefabrication and modular systems, the villa offers exceptional energy efficiency, structural strength, and durability. Natural materials, precise craftsmanship, and clean architectural lines create a timeless design that blends seamlessly with its surroundings.

This luxury villa is a refined expression of modern living, designed and manufactured by dHouse with a focus on quality, comfort, and long-term value. Every element of the villa is carefully engineered to combine elegant architecture with high-performance construction.

Manufactured under controlled conditions, our villas ensure consistently high quality, faster delivery times, and reduced environmental impact compared to traditional construction methods. At dHouse, we don't just build homes — we manufacture living spaces that stand for luxury, sustainability, and a new standard of modern living.



Enhancing the **Way you Live**

Floating Wall

The floating wall creates a sense of lightness and architectural depth, appearing to hover effortlessly within the space. It enhances visual flow while defining areas with subtle elegance and modern precision. communities alike.

3-Meter-High Tiles

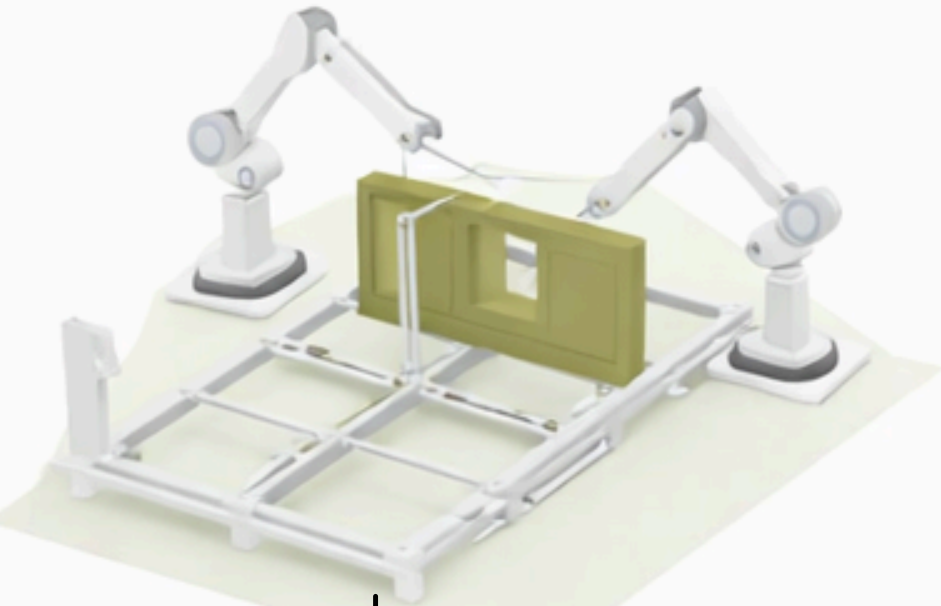
The 3-meter-high tiles emphasize verticality and openness, adding a powerful sense of scale and sophistication. Their seamless surfaces reflect light beautifully, creating a calm, luxurious, and contemporary atmosphere.

Wooden Structures

Natural wooden structures bring warmth and balance to the design, softening modern lines with organic texture. They create a timeless connection between architecture and nature, adding character, comfort, and refined craftsmanship.



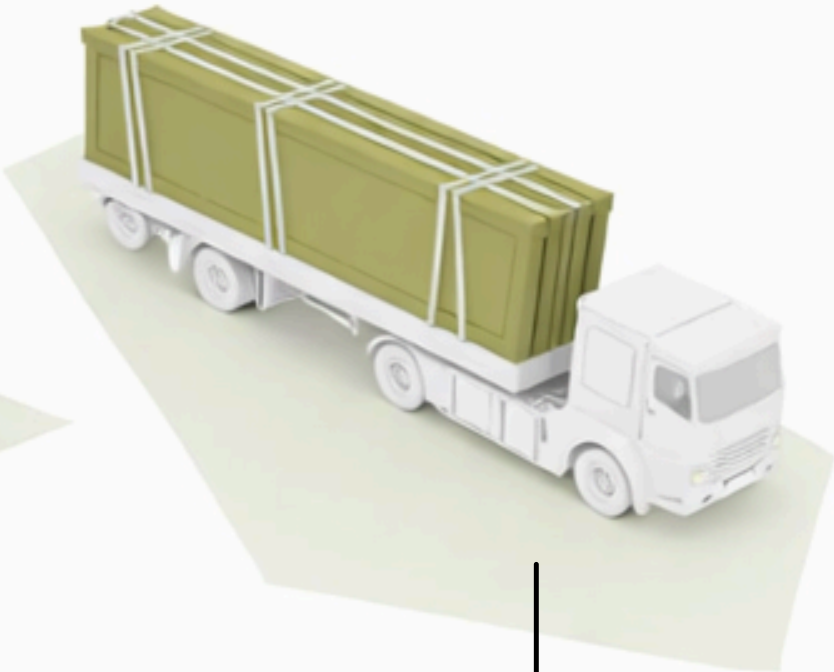
The Process - How it works?



Fabricate



Load



Transport

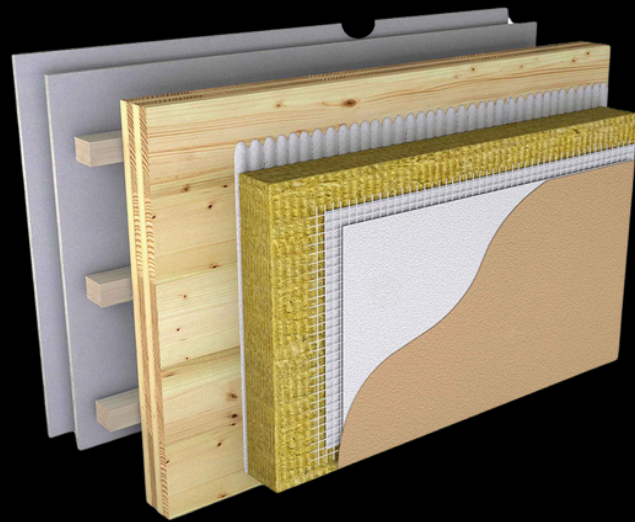


Assembly

Construction System

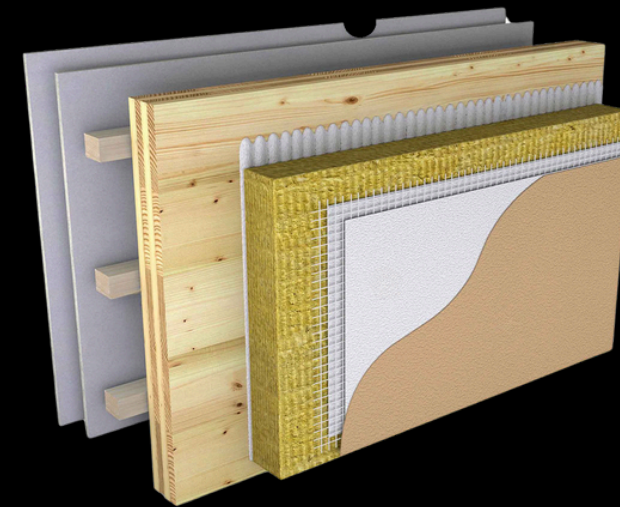
Our building solutions are developed to adapt to a wide spectrum of architectural and structural applications. By relying on proven materials, trusted brands, and internationally approved standards such as **CE** and **ETA**, we ensure reliability, durability, and high performance in every project.

dHouse
be different



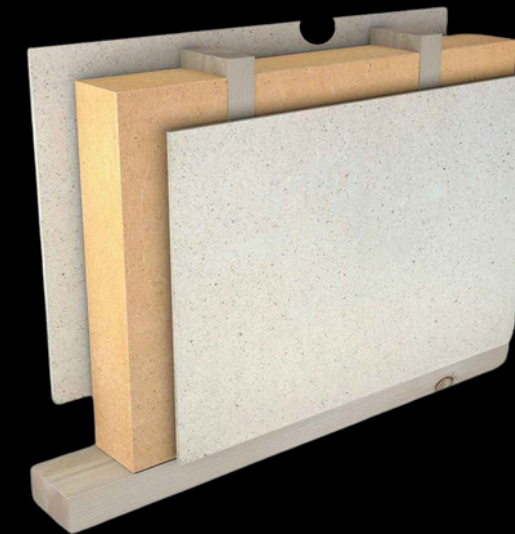
External wall

- 1 Plaster
- 2 Reinforcement mesh
- 3 OSB board 12 mm
- 4 Thermal insulation (Tervol) 50 mm
- 5 Stone wool insulation 50 mm
- 6 Vapor barrier membrane
- 7 OSB board 12 mm
- 8 Timber structure 5 × 10 cm
- 9 Gypsum board 12.5 mm



External wall

- 1 Fiber Cement Boards 10 mm
- 2 Substructure and stone wool insulation 5 cm
- 3 OSB Board/3 Swiss - 15 mm
- 4 Thermal Insulation Tervol 5 cm
- 5 Vapor Barrier Foil
- 6 OSB Board/3 Swiss - 15 mm
- 7 Stone Wool Insulation 5 cm
- 8 Timber Structure 5 × 15 cm
- 9 Fire Resistant Gypsum Board 12.5 mm



Internal wall

- 1 Gypsum SonicBoard panel (acoustic) 12.5 mm
- 2 OSB board 12 mm
- 3 Thermal insulation (Tervol) 100 mm
- 4 Timber structure 10 × 5 cm - KVH
- 5 OSB board 12 mm
- 6 Gypsum SonicBoard board 12.5 mm OR
- 7 WPC Interior Board



Floor

- 1 Laminate AC5 - 12 mm
- 2 Felt underlay
- 3 Screed 5 cm
- 4 Nylon foil
- 5 Styrodur (XPS insulation) 2 cm



Select & Shape

This luxury home combines refined architecture with timeless elegance. Clean lines, generous glazing, and high-quality materials create a living space that feels open, calm, and sophisticated.

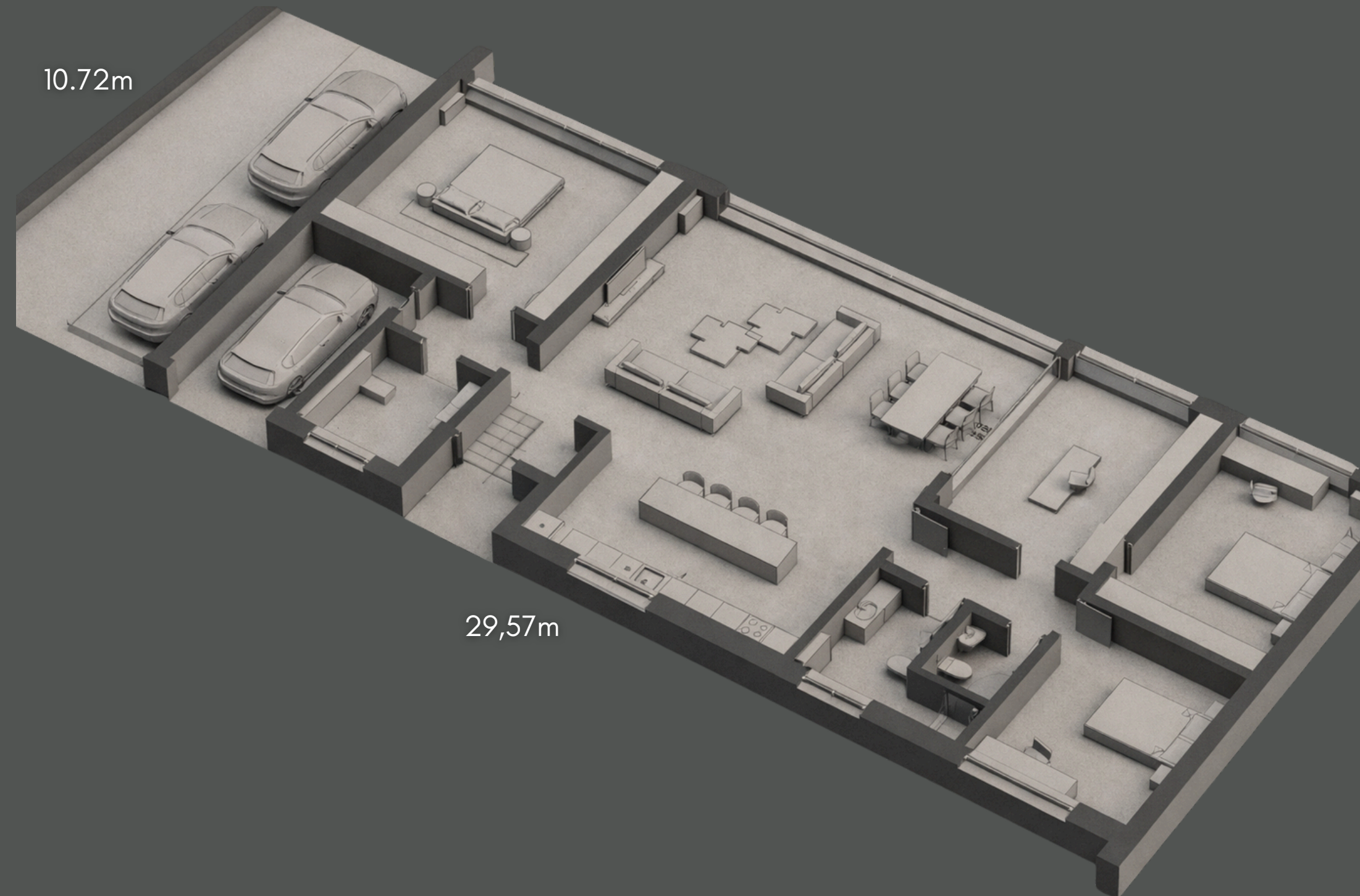


Select & Shape

Choose something that will last forever.



RBK LAYOUT



Ground Floor

No. | Room / Area | Net Area (m²)

1. Entrance - 4.55 m²
2. Living Room, Kitchen & Dining Area - 83.31 m²
3. Hallway - 5.33 m²
4. Home Office - 19.96 m²
5. Bathroom - 7.44 m²
6. Utility Room - 2.94 m²
7. Children's Bedroom - 36.04 m²
8. Walk-in Closet - 4.50 m²
9. Master Bedroom - 30.58 m²
10. Bathroom - 7.64 m²
11. Garage - 15.27 m²

Building Total Net Area - 217.56 m²

Building Total Gross Area - 247.80 m²

+ Parking / Driveway - 58.52 m²

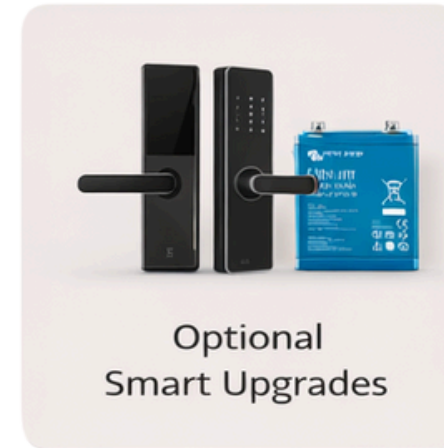
Completed construction – Built as executed!

Built exactly as designed, from concept to reality.



Smart living. Built in.

Not a retrofit. No compromises.



Everything integrated. Not visible.



dHouse
be di erent

The future of living

valentino.ceo@dhouse.world

Croatia, Zagreb – Zagarova ul. 7, 10000

www.dhouse.world

+385 98 955 5276

A stylized, handwritten signature in white ink, consisting of a large loop followed by several smaller, connected strokes.