

# 2026 MODULAR HOUSE REDDIE



# Mediterranean Villa – Where Light, Nature, and Timeless Elegance Meet

This Mediterranean villa is designed as a sanctuary of calm, elegance, and refined comfort. Inspired by traditional Mediterranean architecture, the villa blends natural materials, clean lines, and warm textures to create a harmonious connection between indoor and outdoor living.



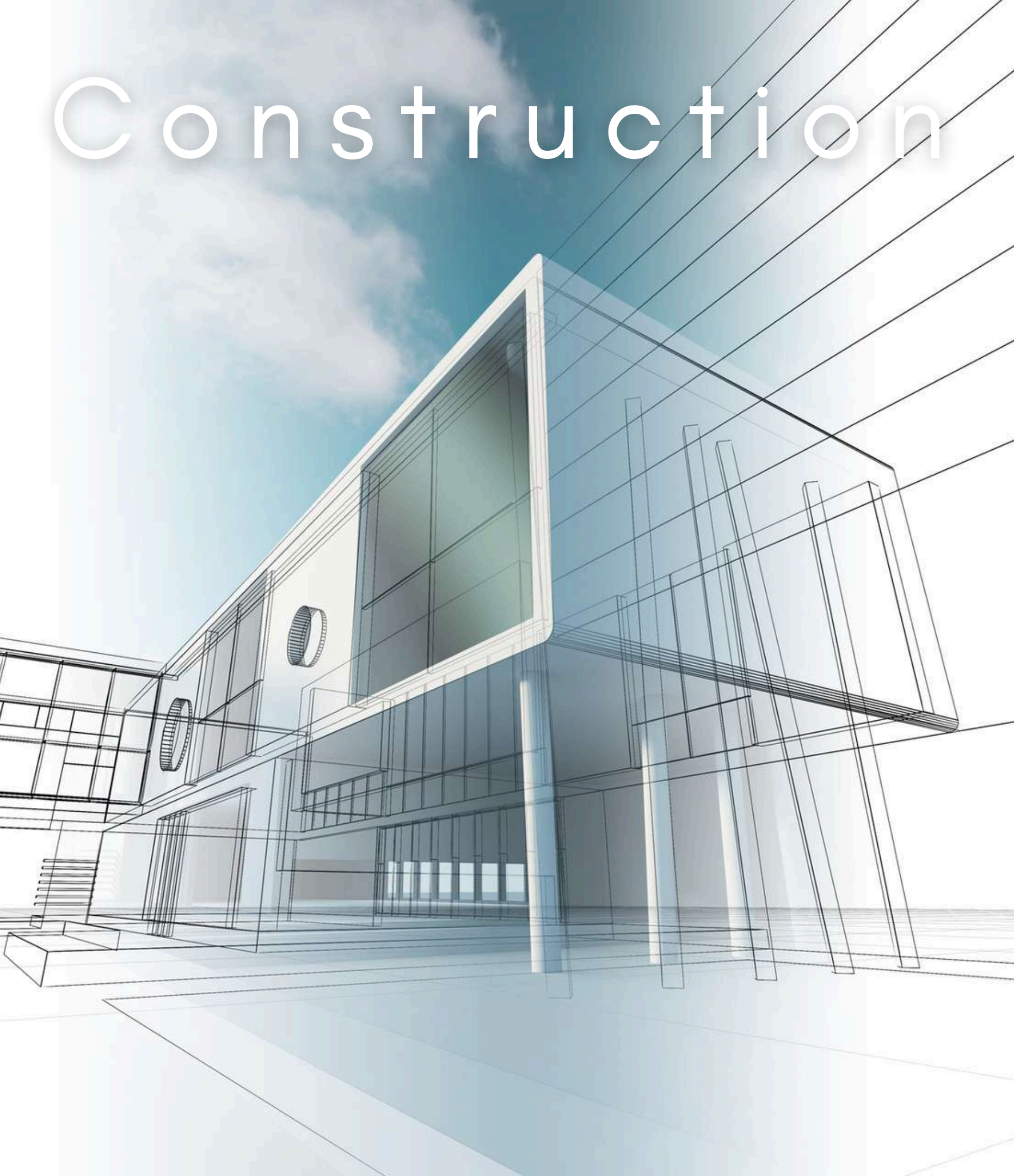
A place to disconnect from the world —  
and reconnect with yourself.

Crafted from high-quality Austrian or Finnish wood, our modular homes combine Scandinavian strength  
with modern design.

**dHouse**  
be different



# Construction Planning



Careful planning is the foundation of every successful building project. From the initial site analysis and concept development to budgeting, material selection, and scheduling, each phase is defined with precision and clarity. Proper construction planning ensures efficient workflows, optimal use of resources, and seamless coordination between all disciplines involved.

The result is a well-structured process that minimizes risks, controls costs, and delivers high-quality, sustainable buildings on time and to the highest standards.

Be Green. Do green.  
Safe Environment.

Tadao Ando:

“Good architecture makes  
people feel good”



# Front View

This striking red house blends timeless Scandinavian charm with modern comfort. Its bold wooden façade and matching tiled roof create a warm, eye-catching presence that stands confidently against the surrounding greenery. Large windows invite natural light during the day and glow beautifully in the evening, giving the home a welcoming and cozy atmosphere.



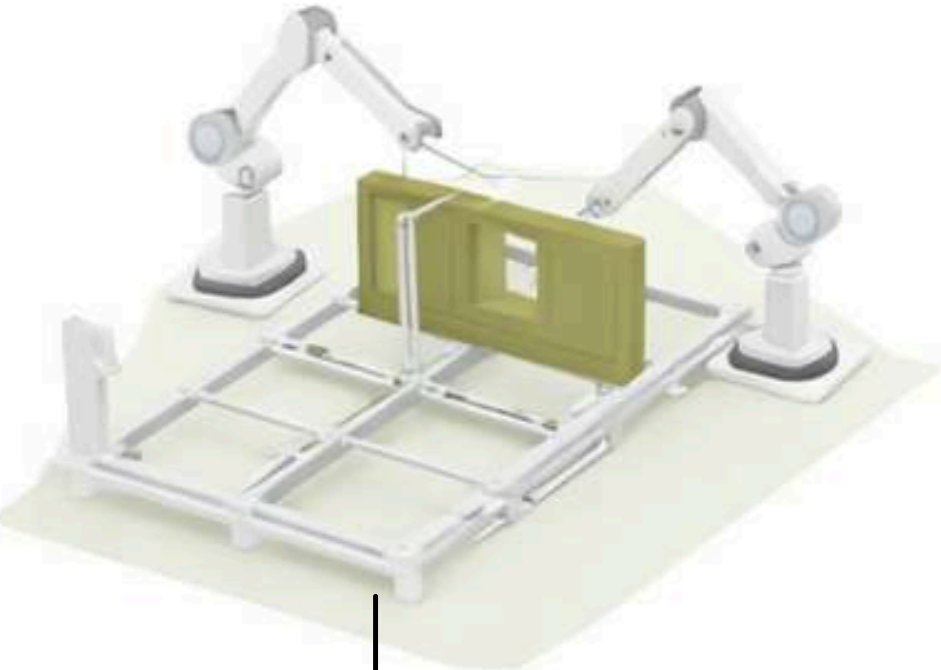
HOME OF DIFFERENT LEVEL

**dHouse**  
be different

ART

The clean architectural lines, symmetrical layout, and carefully designed landscaping enhance its balanced and harmonious appearance. A stone pathway leads to the central entrance, framed by lush garden beds and subtle outdoor details that add character and warmth.

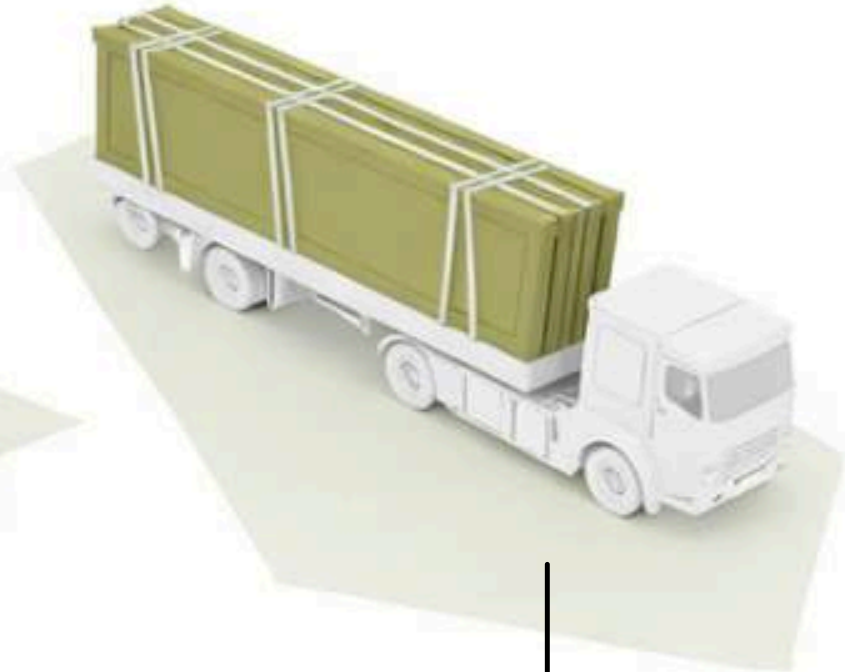
# The Process - How it works?



Fabricate



Load



Transport

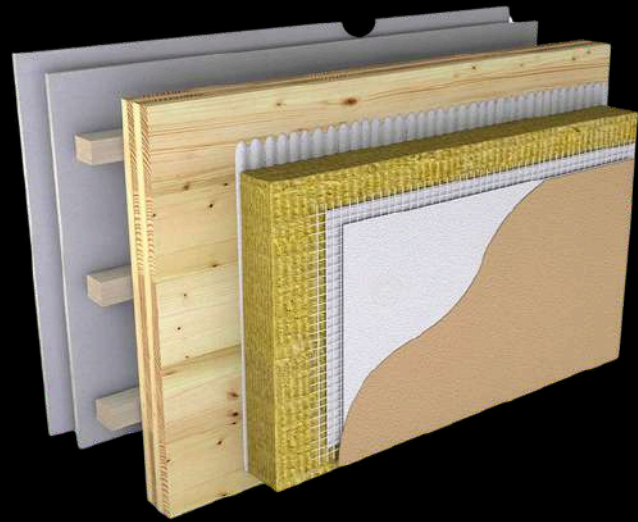


Assembly

# Construction System

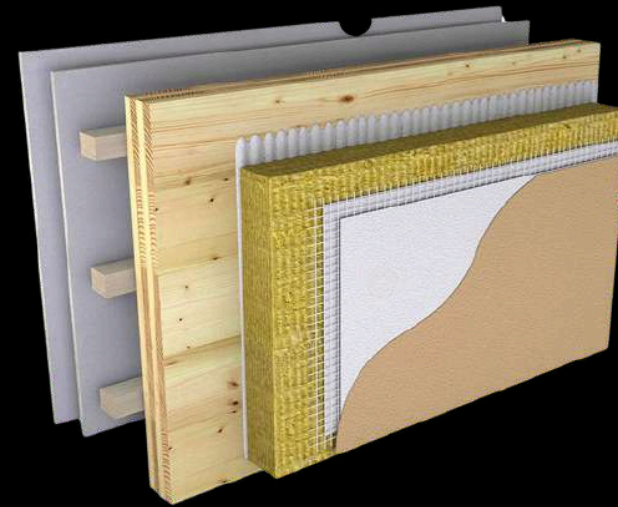
Our building solutions are developed to adapt to a wide spectrum of architectural and structural applications. By relying on proven materials, trusted brands, and internationally approved standards such as **CE** and **ETA**, we ensure reliability, durability, and high performance in every project.

**dHouse**  
be different



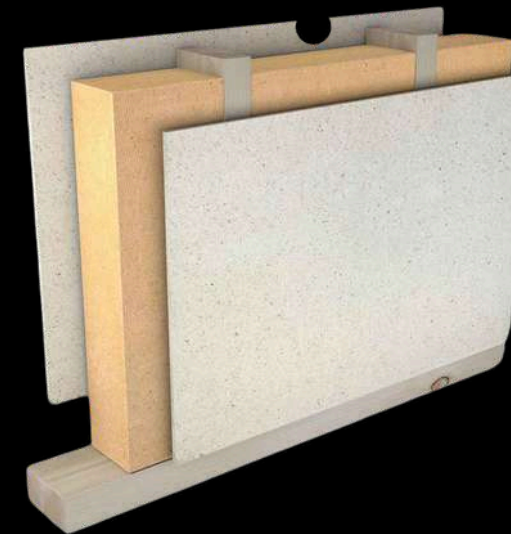
## External wall

- 1 Red Wood
- 2 OSB board 12 mm
- 3 Thermal insulation (Tervol) 50 mm
- 4 Stone wool insulation 50 mm
- 5 Vapor barrier membrane
- 6 OSB board 12 mm
- 7 Timber structure 5 × 10 cm
- 8 Gypsum board 12.5 mm



## External wall

- 1 Red Wood
- 2 Wool insulation 5 cm
- 3 OSB Board/3 Swiss - 15 mm
- 4 Thermal Insulation Tervol 5 cm
- 5 Vapor Barrier Foil
- 6 Stone Wool Insulation 5 cm
- 7 Timber Structure 5 × 10 cm



## Internal wall

- 1 Gypsum SonicBoard panel (acoustic) 12.5 mm / Wood
- 2 OSB board 12 mm
- 3 Thermal insulation (Tervol) 100 mm
- 4 Timber structure 10 × 5 cm - KVH
- 5 OSB board 12 mm
- 6 Gypsum SonicBoard board 12.5 mm OR
- 7 WPC Interior Board



## Floor

- 1 Laminate AC5 - 12 mm
- 2 Felt underlay
- 3 Screed 5 cm / Marble Screed
- 4 Nylon foil
- 5 Styrodur (XPS insulation) 2 cm



# Construction System

Our building solutions are developed to adapt to a wide spectrum of architectural and structural applications. By relying on proven materials, trusted brands, and internationally approved standards such as **CE** and **ETA**, we ensure reliability, durability, and high performance in every project.

**dHouse**  
be different

## Equipped Bathrooms / Floor Heating Optional

- 1 Mirror
- 2 Concealed toilet cistern / Geberit
- 3 Cabin
- 4 Bath Furniture
- 5 Toilet bowl
- 6 Washbasin
- 7 Shower glass enclosure
- 8 Three types of tiles
- 9 Floor Heating - Optional



REDDIEBACK VIEW

DISCOVER



# Designed for Families. Built for Generations.

dHouse

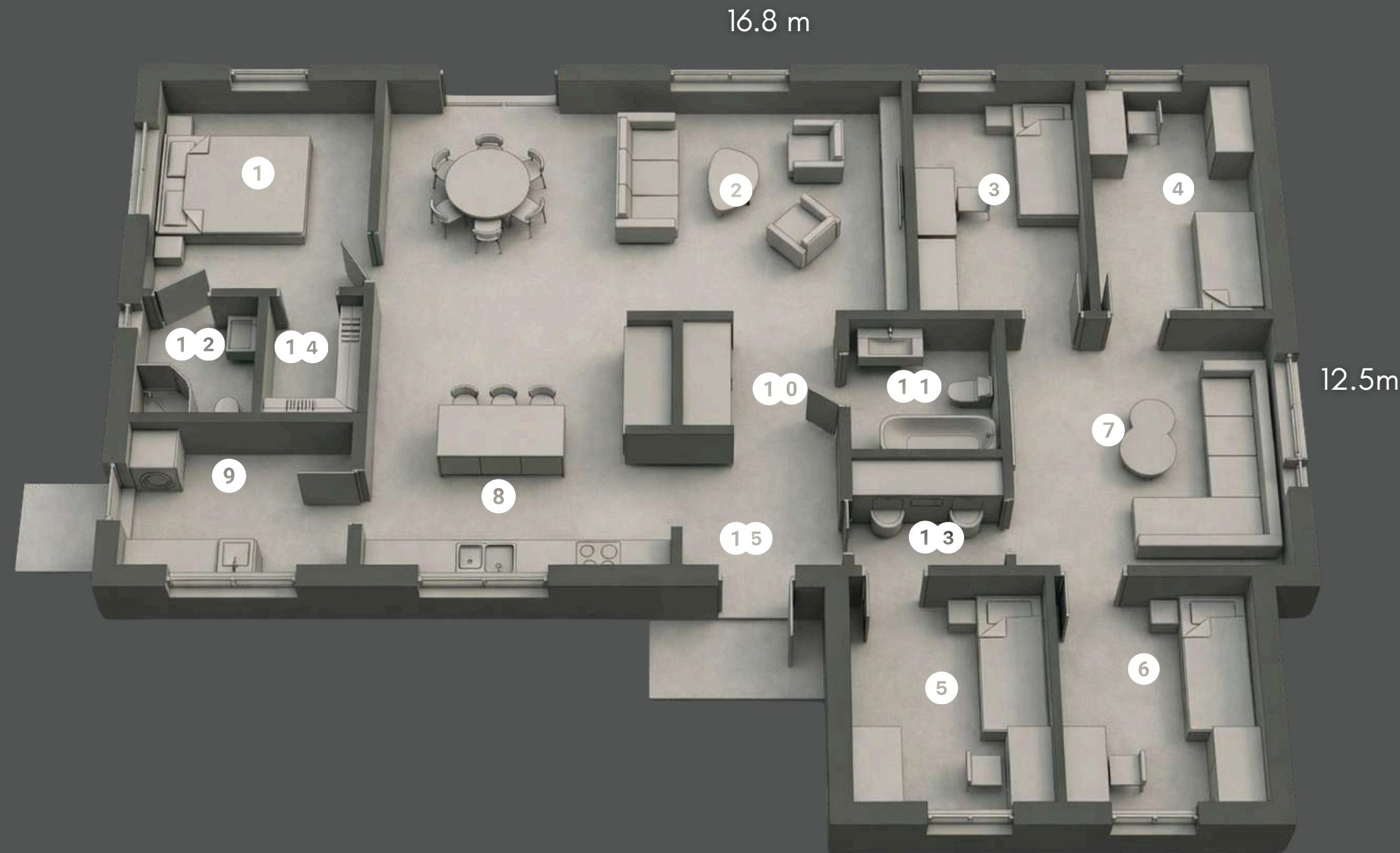
A private residential concept where architecture, nature, and modern living meet in perfect harmony.  
A curated neighborhood of premium wooden homes – unified in design, yet individual in character.

Built with high-quality Austrian or Finnish timber, each home reflects strength, sustainability, and timeless elegance.



# REDDIE LAYOUT

## Ground Floor



- 1. Bedroom 11.3m<sup>2</sup>
- 2. Living room + dining area 30.7m<sup>2</sup>
- 3. Bedroom 9.9m<sup>2</sup>
- 4. Bedroom 9.9m<sup>2</sup>
- 5. Bedroom 9.1m<sup>2</sup>
- 6. Bedroom 9.1m<sup>2</sup>
- 7. Second living room 10.6m<sup>2</sup>
- 8. Kitchen 17.6m<sup>2</sup>
- 9. Hallway 7.2m<sup>2</sup>
- 10. Hallway 6.2m<sup>2</sup>
- 11. Bathroom 4.5m<sup>2</sup>
- 12. Hallway 3.7m<sup>2</sup>
- 13. WC 3.2m<sup>2</sup>
- 14. Shower room 2.6m<sup>2</sup>
- 15. Hallway 4.6m<sup>2</sup>

Total net Building area 139.2m<sup>2</sup>

Approximate gross Building area 156m<sup>2</sup>

# Choose PEACE

Optional furnishings crafted for comfort, cohesion, and a timeless living experience.



# Smart living. Built in.

Not a retrofit. No compromises.



Everything integrated. Not visible.



**dHouse**  
be different

*The future of living*

valentino.ceo@dhouse.world

Croatia, Zagreb - Zagarova ul. 7, 10000

www.dhouse.world

+385 98 955 5276

A stylized, handwritten signature in white ink, consisting of a large, flowing loop followed by several smaller, connected strokes.