

2026 MODULAR HOUSE SOBO



Sowing the foundation for sustainable living.

Designed with sustainability at their core, our wooden multifamily houses use renewable materials and smart design to deliver energy-efficient, low-impact living spaces. The natural warmth of wood creates an inviting atmosphere while contributing to a healthier environment. Each home is a step toward a more sustainable future and stronger, more conscious communities.





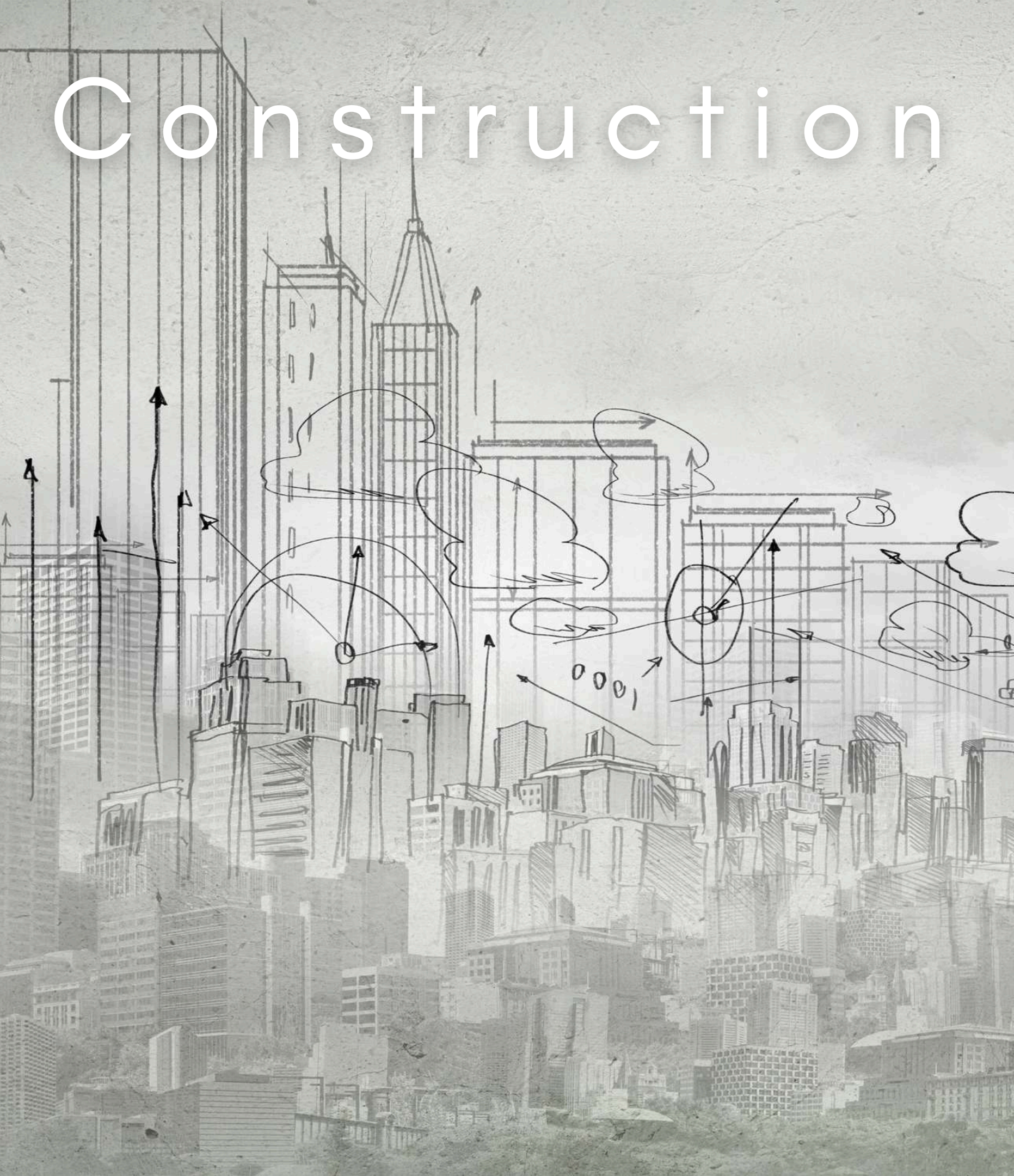
Where Design Meets Comfort

The exterior combines high-quality natural wood with light anthracite metal elements, creating a sophisticated contrast that feels both modern and timeless. The anthracite roofing and façade accents add depth and elegance while offering durability and low maintenance.

Our modular homes are thoughtfully designed to simplify everyday life and create a better living experience for you.



Construction Planning



Careful planning is the foundation of every successful building project. From the initial site analysis and concept development to budgeting, material selection, and scheduling, each phase is defined with precision and clarity. Proper construction planning ensures efficient workflows, optimal use of resources, and seamless coordination between all disciplines involved.

The result is a well-structured process that minimizes risks, controls costs, and delivers high-quality, sustainable buildings on time and to the highest standards.

Be Green. Do green.
Safe Enviroment.

Tadao Ando:

“Good architecture makes
people feel good”



Wooden Home – **Anthracite** Variant

This version features the **anthracite** variant, characterized by a refined, contemporary color palette that enhances the home's clean lines and modern character.

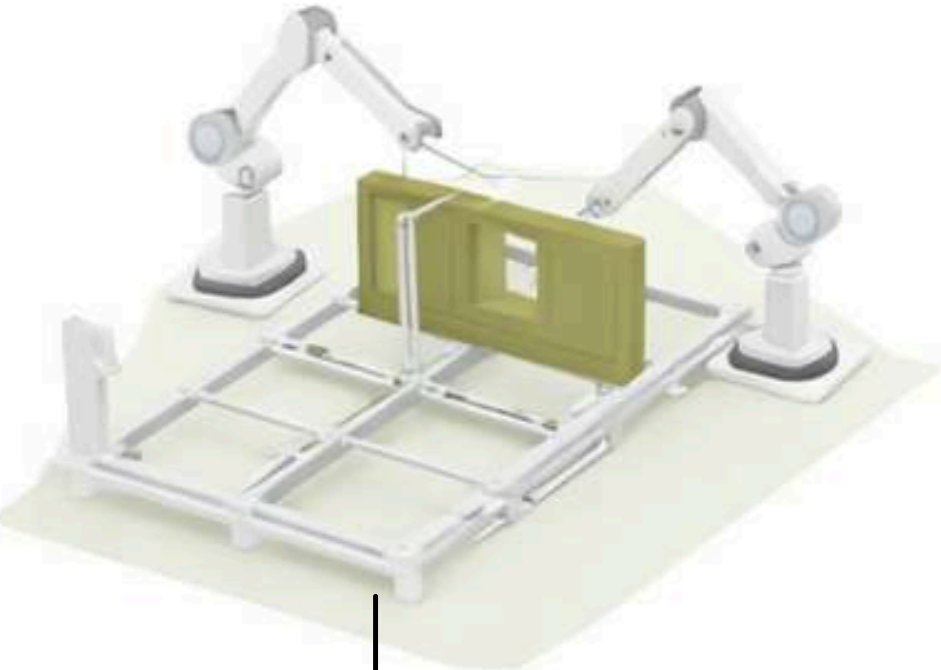


Wooden Home – **WHITE** Variant

This version features the **WHITE** variant, characterized by a refined, contemporary color palette that enhances the home's clean lines and modern character.



The Process - How it works?



Fabricate



Load



Transport

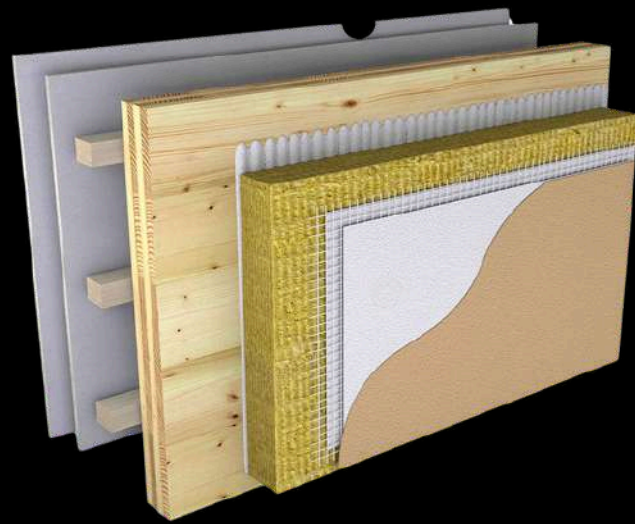


Assembly

Construction System

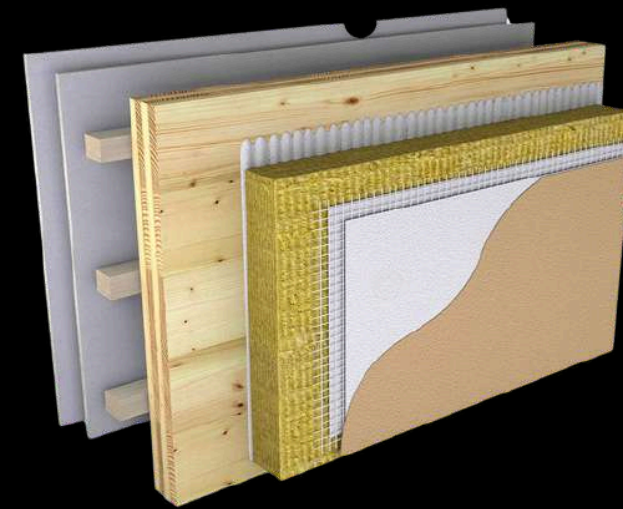
Our building solutions are developed to adapt to a wide spectrum of architectural and structural applications. By relying on proven materials, trusted brands, and internationally approved standards such as **CE** and **ETA**, we ensure reliability, durability, and high performance in every project.

dHouse
be different



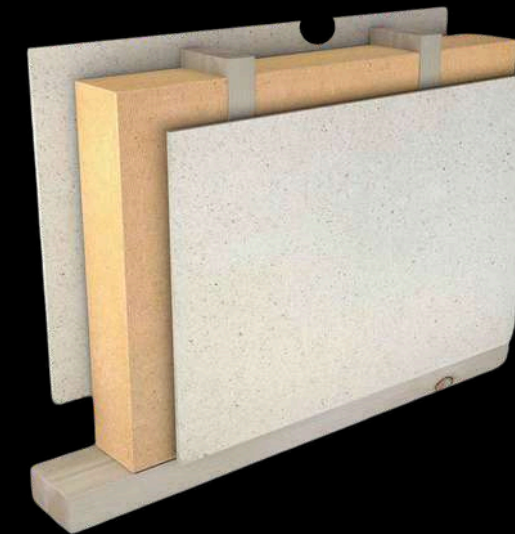
External wall

- 1 Metal / Wood
- 2 Reinforcement mesh
- 3 OSB board 12 mm
- 4 Thermal insulation (Tervol) 50 mm
- 5 Stone wool insulation 50 mm
- 6 Vapor barrier membrane
- 7 OSB board 12 mm
- 8 Timber structure 5 × 10 cm
- 9 Gypsum board 12.5 mm



External wall

- 1 Metal / Wood
- 2 Substructure and stone wool insulation 5 cm
- 3 OSB Board/3 Swiss - 15 mm
- 4 Thermal Insulation Tervol 5 cm
- 5 Vapor Barrier Foil
- 6 OSB Board/3 Swiss - 15 mm
- 7 Stone Wool Insulation 5 cm
- 8 Timber Structure 5 × 15 cm
- 9 Fire Resistant Gypsum Board 12.5 mm



Internal wall

- 1 Gypsum SonicBoard panel (acoustic) 12.5 mm
- 2 OSB board 12 mm
- 3 Thermal insulation (Tervol) 100 mm
- 4 Timber structure 10 × 5 cm - KVH
- 5 OSB board 12 mm
- 6 Gypsum SonicBoard board 12.5 mm OR
- 7 WPC Interior Board



Floor

- 1 Laminate AC5 - 12 mm
- 2 Felt underlay
- 3 Screed 5 cm
- 4 Nylon foil
- 5 Styrodur (XPS insulation) 2 cm



Construction System

Our building solutions are developed to adapt to a wide spectrum of architectural and structural applications. By relying on proven materials, trusted brands, and internationally approved standards such as **CE** and **ETA**, we ensure reliability, durability, and high performance in every project.

dHouse
be different

Equipped Bathrooms / Floor Heating Optional

- 1 Mirror
- 2 Concealed toilet cistern / Geberit
- 3 Cabin
- 4 Bath Furniture
- 5 Toilet bowl
- 6 Washbasin
- 7 Shower glass enclosure
- 8 Three types of tiles
- 9 Floor Heating - Optional



dHouse
be different

EMOTION

SUBO BACK VIEW

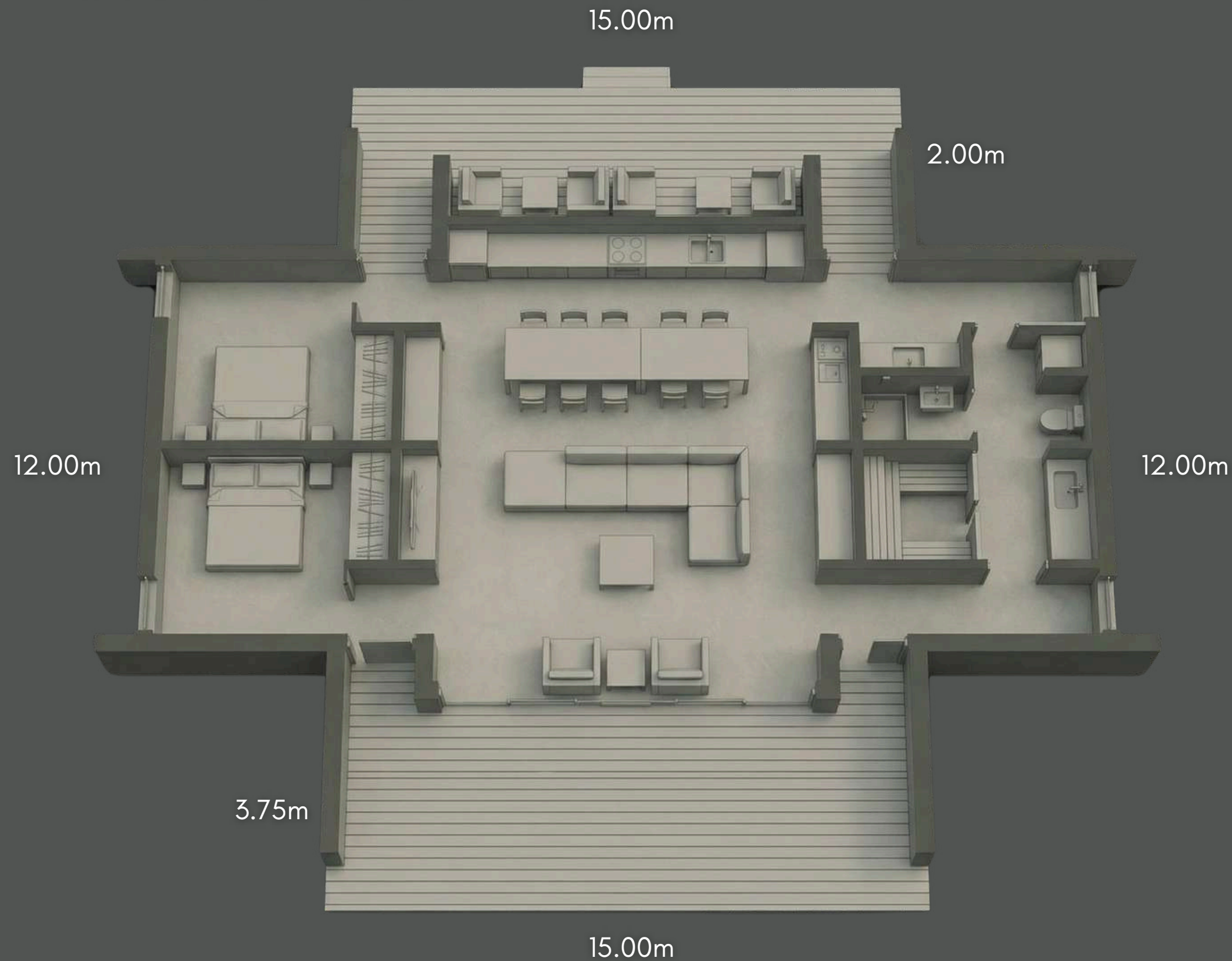
The exterior is defined by a clean, contemporary architectural language that emphasizes simplicity, balance, and connection to nature. The elongated single-level form creates a calm and elegant silhouette, while the combination of warm natural wood cladding and refined dark accents adds depth and character. Large glazed openings bring natural light into the interior and create a seamless transition between indoor and outdoor living spaces.

Sunrise White Version

We can offer additional option based on your taste...



SUBO LAYOUT



Ground Floor

No. | Room / Area | Net Area (m²)

- 1. Bedroom 1 - 9.2 m²
- 2. Bedroom 2 - 9.2 m²
- 3. Living room with kitchen and dining area (open space) - 30.3 m²
- 4. Bathroom with wellness area (shower, WC, sauna) - 9.5 m²
- 5. Sauna - 2.8 m²
- 6. Hallway, entrance area, built-in wardrobes and circulation space - 21.0 m²

Net Building area - 80 m²

Gross building area - 85 m²

Terraces - 45 m²

Choose PEACE

Optional furnishings crafted for comfort, cohesion, and a timeless living experience.



Smart living. Built in.

Not a retrofit. No compromises.



Everything integrated. Not visible.



dHouse
be di erent

The future of living

valentino.ceo@dhouse.world

Croatia, Zagreb – Zagarova ul. 7, 10000

www.dhouse.world

+385 98 955 5276

A stylized, handwritten signature in white ink, consisting of a large loop followed by several smaller, connected strokes.