

# 2026 MODULAR HOUSE ALEXANDRIA



# LAMINATED WOOD & CONSTRUCTION



LAMINATED WOOD



dHouse



## Back View - ALEXANDRIA

elegant villa combines modern architecture with the timeless strength of natural stone. The stone facade gives the home a powerful, authentic character while ensuring durability, weather resistance, and low maintenance.



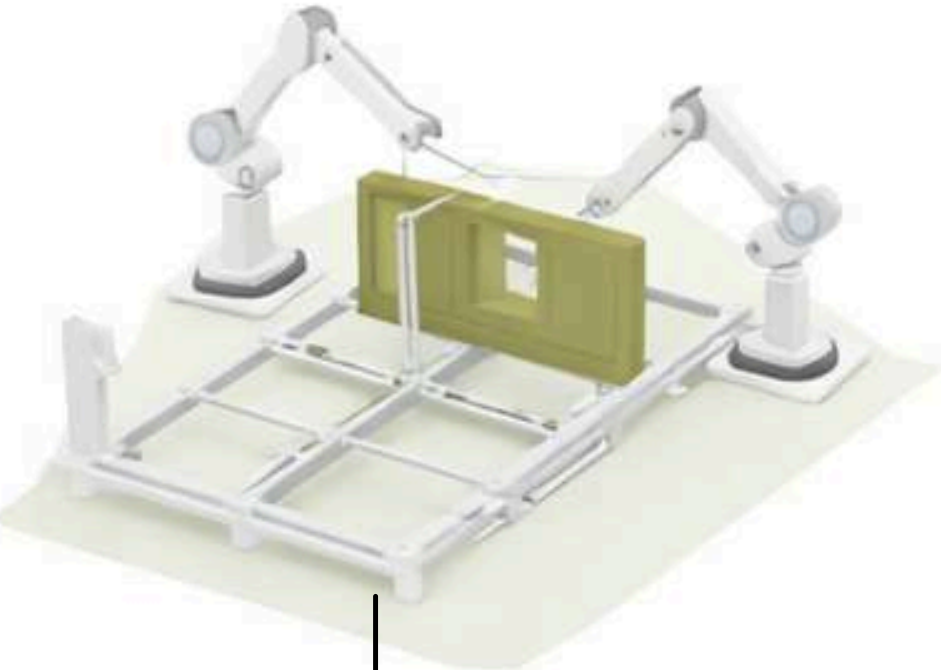
# ALEXANDRIA Villa

The stone facade not only enhances aesthetic appeal but also improves thermal mass and energy efficiency.



The exterior blends harmoniously with the landscape, offering a perfect balance between solid structure and natural surroundings.

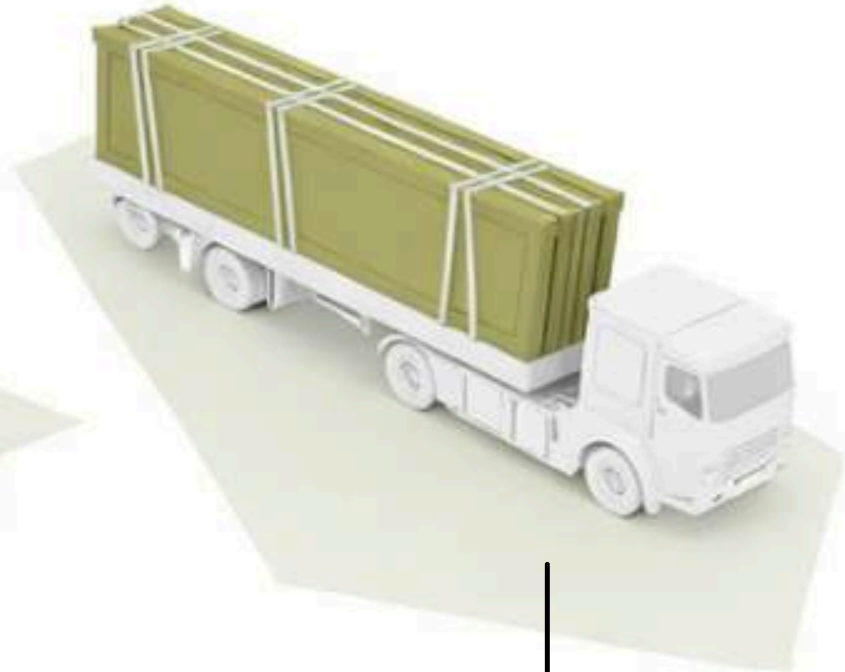
# The Process - How it works?



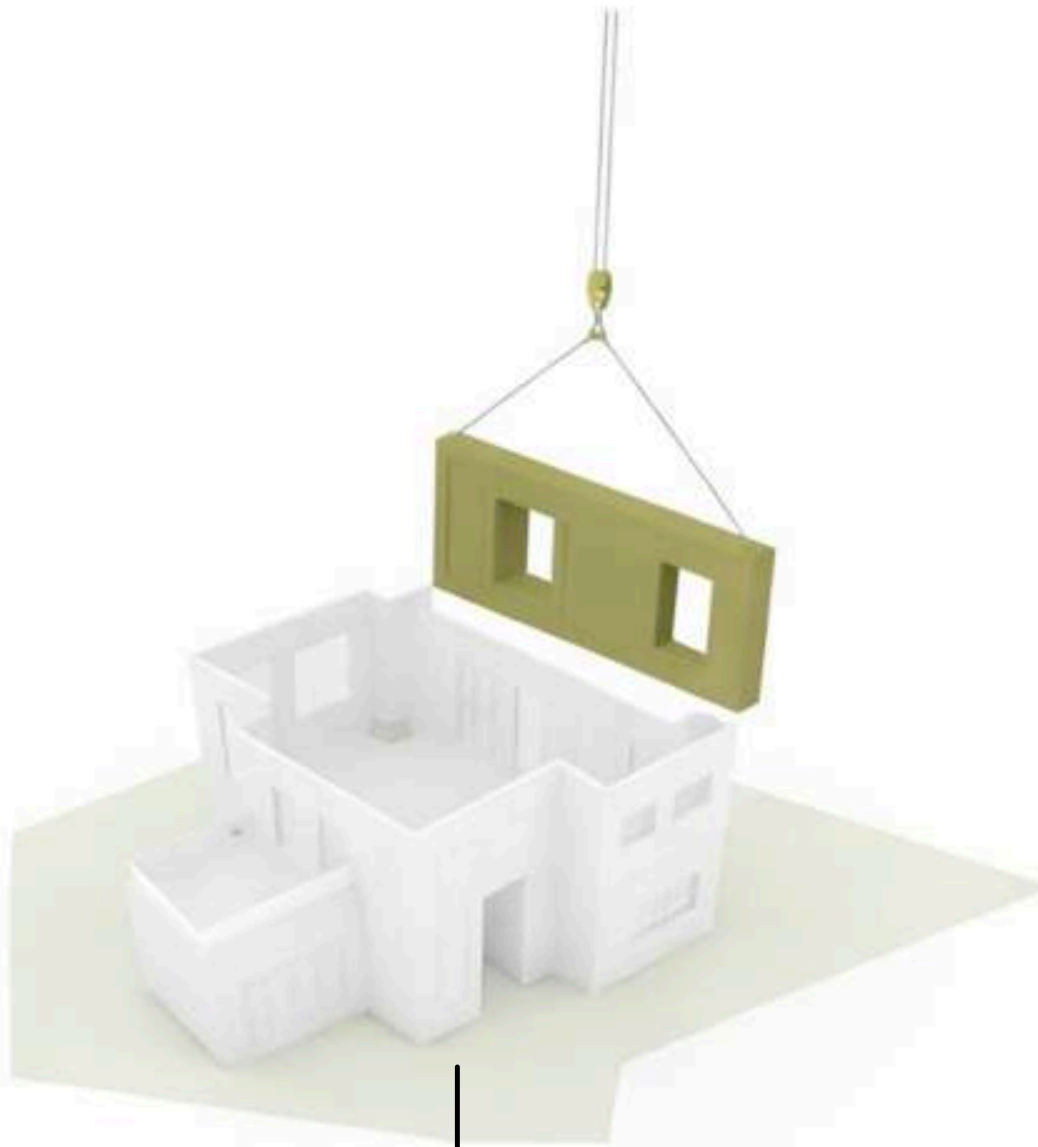
Fabricate



Load



Transport



Assembly

# Construction System

Our building solutions are developed to adapt to a wide spectrum of architectural and structural applications. By relying on proven materials, trusted brands, and internationally approved standards such as **CE** and **ETA**, we ensure reliability, durability, and high performance in every project.



## External wall

- 1 Fiber Cement/ Wood
- 2 Reinforcement mesh
- 3 OSB board 12 mm
- 4 Thermal insulation (Tervol) 50 mm
- 5 Stone wool insulation 50 mm
- 6 Vapor barrier membrane
- 7 OSB board 12 mm
- 8 Timber structure 5 × 10 cm
- 9 Gypsum board 12.5 mm



## External wall

- 1 Natural Finish Wood
- 2 Substructure and stone wool insulation 5 cm
- 3 OSB Board/3 Swiss - 15 mm
- 4 Thermal Insulation Tervol 5 cm
- 5 Vapor Barrier Foil
- 6 OSB Board/3 Swiss - 15 mm
- 7 Stone Wool Insulation 5 cm
- 8 Timber Structure 5 × 15 cm
- 9 Gypsum Board 12.5 mm / Dark Wood



## Internal wall

- 1 Gypsum panel 12.5 mm / Decorative Board
- 2 OSB board 12 mm
- 3 Thermal insulation (Tervol) 100 mm
- 4 Timber structure 10 × 5 cm - KVH
- 5 OSB board 12 mm
- 6 Gypsum SonicBoard board 12.5 mm OR
- 7 WPC Interior Board



## Floor

- 1 Laminate AC5 - 12 mm
- 2 Felt underlay
- 3 Screed 5 cm
- 4 Nylon foil
- 5 Styrodur (XPS insulation) 2 cm



# Angle View - ALEXANDRIA



# Construction System

Our building solutions are developed to adapt to a wide spectrum of architectural and structural applications. By relying on proven materials, trusted brands, and internationally approved standards such as **CE** and **ETA**, we ensure reliability, durability, and high performance in every project.

## Equipped Bathrooms / Floor Heating Optional

- 1 Mirror
- 2 Concealed toilet cistern / Geberit
- 3 Cabin
- 4 Bath Furniture
- 5 Toilet bowl
- 6 Washbasin
- 7 Shower glass enclosure
- 8 Three types of tiles
- 9 Floor Heating - Optional



# Construction System

Our building solutions are developed to adapt to a wide spectrum of architectural and structural applications. By relying on proven materials, trusted brands, and internationally approved standards such as **CE** and **ETA**, we ensure reliability, durability, and high performance in every project.

## Floor Heating Details:

- 1 12- 24V
- 2 0.2mm Thick
- 3 Under: Laminate, Wood or Tile
- 4 For inside or Outside usage
- 5 30sqm = 2,5Kw Power instalment
- 6 One day instalment
- 7 25 Years of Guarntee
- 8 No Maintaince needed
- 9 Optional for order

<https://ecomaxx.dhouse.mk/>

## ALLOY FOIL HEATING

12-24V



# ALEXANDRIA Villa - TOP VIEW

The stone facade not only enhances aesthetic appeal but also improves thermal mass and energy efficiency.



DETAILS



# Designed for Families. Built for Generations.

A private residential concept where architecture, nature, and modern living meet in perfect harmony.  
A curated neighborhood of premium wooden homes – unified in design, yet individual in character.

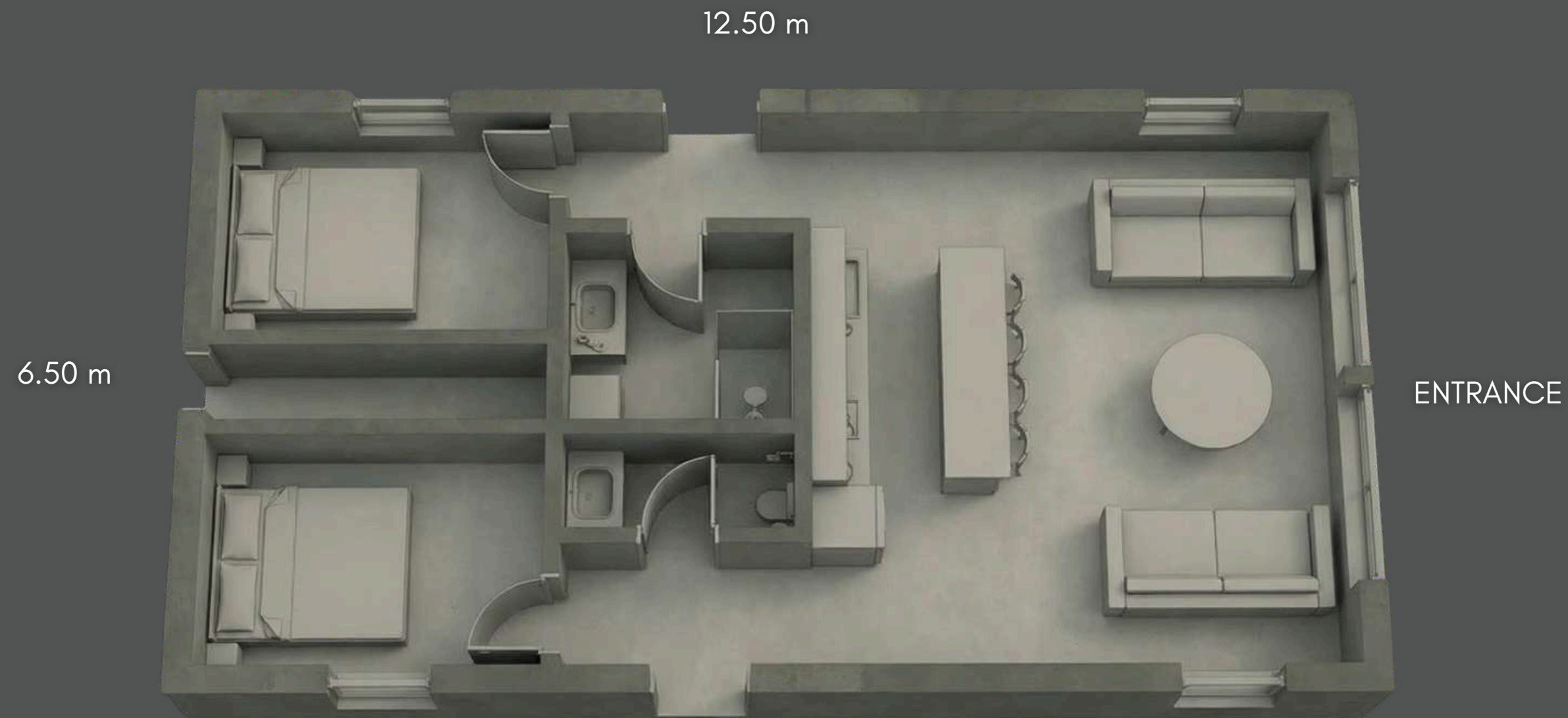
The blue roof serves as a strong visual statement, contrasting beautifully with the natural wood tones and emphasizing the clean geometric lines of the structure.

Designed with both comfort and functionality in mind, this home offers a balanced layout ideal for modern lifestyles, whether as a permanent residence or a premium retreat.



# ALEXANDRIA LAYOUT

## Ground Floor



Gross area (Bruto): 81.25 m<sup>2</sup>

Net living area (Neto): ≈ 70 m<sup>2</sup>

Bedroom: 8.12 m<sup>2</sup>

Bedroom: 8.16 m<sup>2</sup>

Bathroom: 4.00 m<sup>2</sup>

WC: 1.80 m<sup>2</sup>

Living room + kitchen + dining area: 36.07 m<sup>2</sup>

Hallway / entrance: 7-8 m<sup>2</sup>



# ALEXANDRIA PREMIUM Villa

This villa represents a refined living experience — where modern comfort meets natural elegance..

Every angle is purposeful, every space designed to feel open yet protected.



# Choose PEACE

Optional furnishings crafted for comfort,  
cohesion, and a timeless living experience.



# Smart living. Built in.

Not a retrofit. No compromises.



Everything integrated. Not visible.



**dHouse**  
be different

*The future of living*

valentino.ceo@dhouse.world

Croatia, Zagreb - Zagarova ul. 7, 10000

www.dhouse.world

+385 98 955 5276

A stylized, handwritten signature in white ink, consisting of a large loop followed by several smaller, connected strokes.